

# 2024 ANNUAL CONFERENCE

Wisconsin Counties Association



8:00 – 9:00 a.m.

**County Airports: Making an Economic Impact  
Beyond Aviation**

# County Airports and Stakeholder Collaboration



Sheboygan County Memorial International Airport (KSBM)



# Discussion Outline

- Sheboygan County Memorial International Airport (KSBM)
- Airport Funding
- Role and Impact of Airports
- Challenges Faced
- Opportunities
- Stakeholder Collaboration at KSBM
  - US Customs and Border Protection
  - Lake Breeze Aviation
- Looking Forward
- Questions



# Sheboygan County Memorial International Airport (KSBM)

- 24 / 7 / 365 facility
- Aviation Heritage Center of Wisconsin
- About 40,000 aircraft operations annually
- 5th busiest General Aviation airport in WI







# Sheboygan County Memorial International Airport (KSBM)



# Sheboygan County Memorial International Airport (KSBM)

## Investments - Past & Current

- Cracksealing (completed)
- Taxiway R paving
- Taxilane paving





# Sheboygan County Memorial International Airport (KSBM)

## Investments - Past & Current

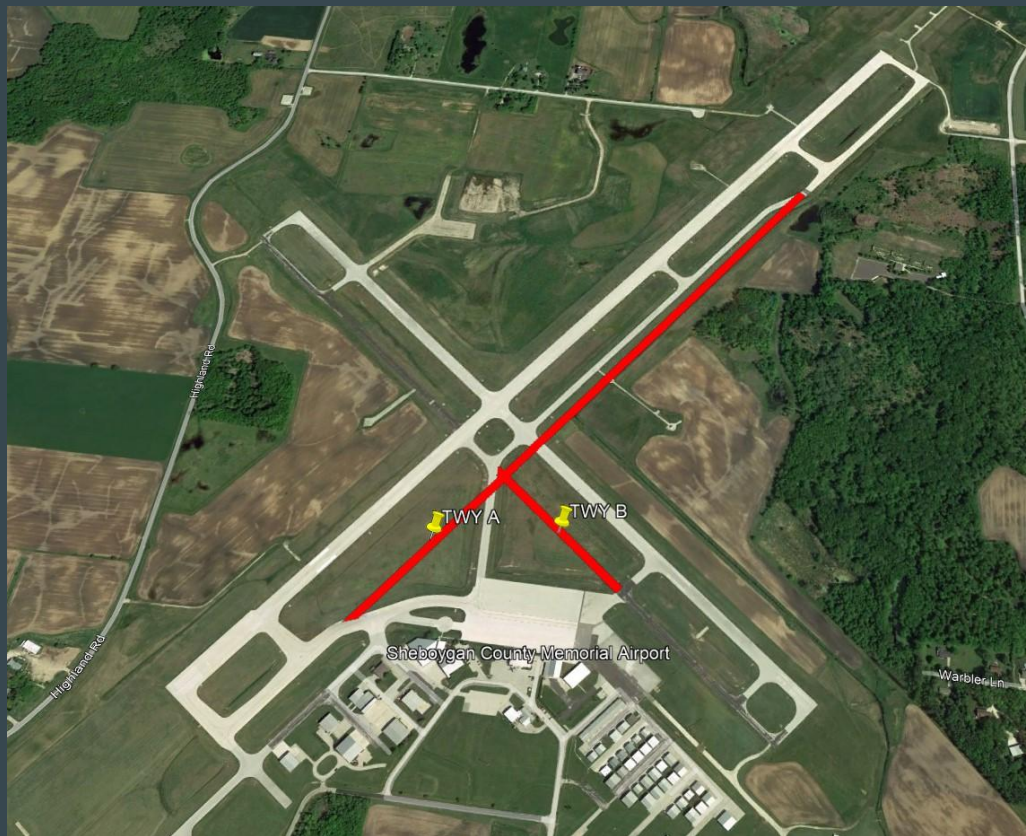
- Runway 4/22 relief cuts
- Re-painting runway markings



# Sheboygan County Memorial International Airport (KSBM)

## Investments - Current & Upcoming

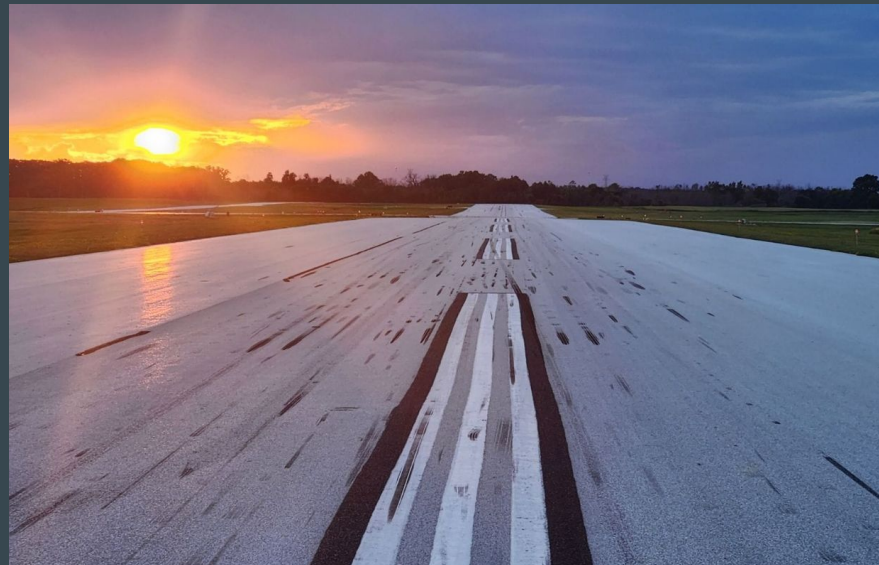
- Taxiway A re-alignment
- Taxiway B midfield construction



# Sheboygan County Memorial International Airport (KSBM)

## Investments - Current & Upcoming

- Master Plan
- Runway 4/22 reconstruction





# Airport Funding

- Elements of Airport Improvement Program
  - Entitlement
  - Apportionment
  - Discretionary
  - Bipartisan Infrastructure Law
- Matching funds
  - State
  - Local sponsor (Airport)



# Airport Funding

## Administration of funds

- BOA as liaison for FAA
- Airport identifies projects
- Airport petitions State
- Payment and/or acceptance of funding





# Role and Impact of Airports

- Value to State economy
- Facilitating sense of community



# Role and Impact of Airports

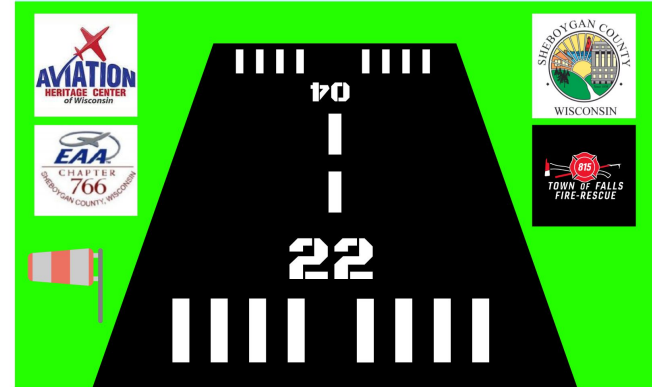
Facilitating sense of community



## ***AIRPORT OPEN HOUSE AND FIRE SAFETY NIGHT***



***AIRPLANES, FOOD TRUCKS, FIRE TRUCKS AND MORE!***



**MONDAY, OCTOBER 10 6PM-8PM**

**SHEBOYGAN CO MEMORIAL AIRPORT  
AVIATION HERITAGE CENTER PARKING LOT**



# Role and Impact of Airports

Facilitating sense of community



# Challenges Faced

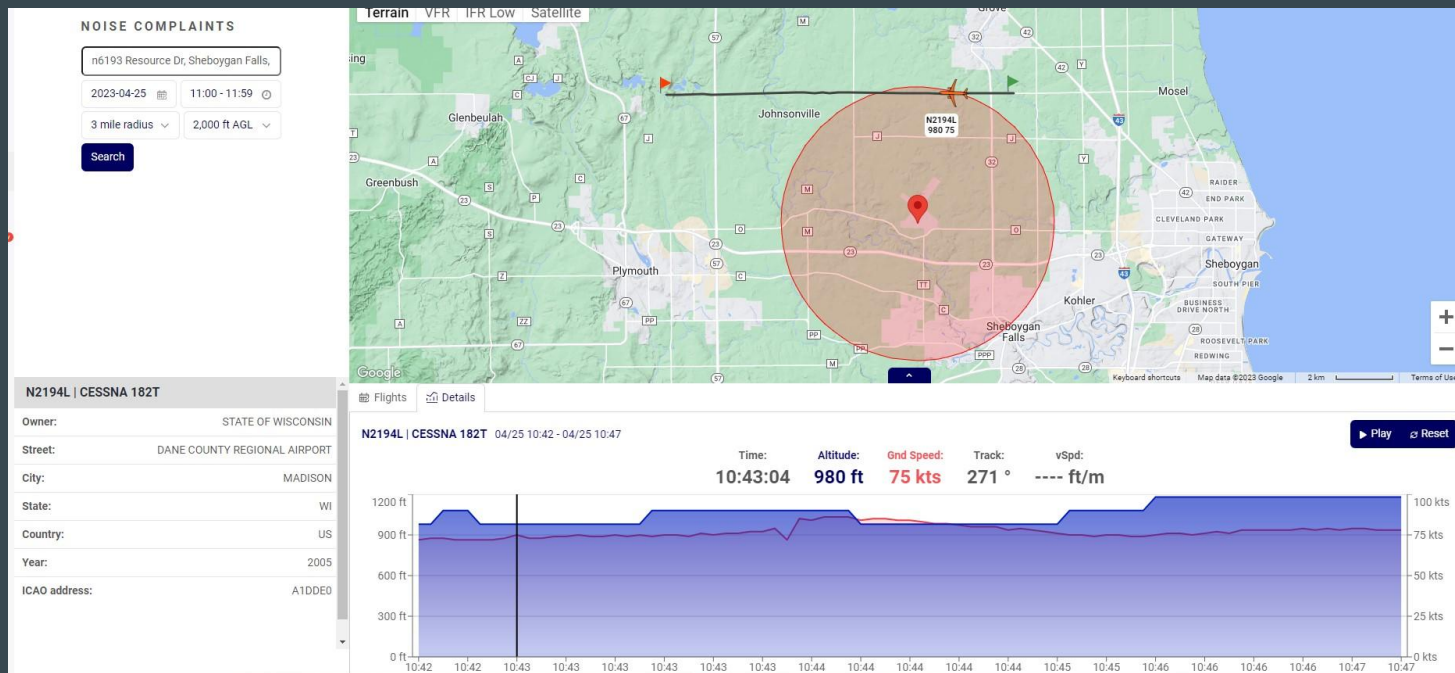
Issues affecting airports in Wisconsin

- Act 12 - Personal property tax
- Timing of funding
- Wildlife mitigation
- Weather and pavement conditions

ASSESSMENT CRITERIA	
Runway Condition Description	Code
• Dry	6
<ul style="list-style-type: none"> <li>• Frost</li> <li>• Wet (includes damp and 1/8 inch depth or less of water)</li> </ul> <b>1/8 inch (3mm) depth or less of</b> <ul style="list-style-type: none"> <li>• Slush</li> <li>• Dry Snow</li> <li>• Wet Snow</li> </ul>	5
<b>5° F (–15°C) and colder outside air temperature</b> <ul style="list-style-type: none"> <li>• Compacted Snow</li> </ul>	4
<ul style="list-style-type: none"> <li>• Slippery When Wet (wet runway)</li> <li>• Dry Snow or Wet Snow (any depth) over Compacted Snow</li> </ul> <b>Greater than 1/8 inch (3mm) depth of</b> <ul style="list-style-type: none"> <li>• Dry Snow</li> <li>• Wet Snow</li> </ul> <b>Warmer than 5°F (–15°C) outside air temperature</b> <ul style="list-style-type: none"> <li>• Compacted Snow</li> </ul>	3
<b>Greater than 1/8 inch (3mm) depth of</b> <ul style="list-style-type: none"> <li>• Water</li> <li>• Slush</li> </ul>	2
• Ice	1
<ul style="list-style-type: none"> <li>• Wet Ice</li> <li>• Slush over Ice</li> <li>• Water over Compacted Snow</li> <li>• Dry Snow or Wet Snow over Ice</li> </ul>	0

# Challenges Faced

- Noise/neighbor concerns
- Funding availability
- Environmental topics



# Opportunities

## Opportunities for airports in Wisconsin

- Stable economic conditions
- Alternative funding possibilities
- Events
  - Oshkosh



# Opportunities

Locally at KSBM

- Supportive leadership structure
- Stable, locally-owned but international companies
- FBO ownership





# Stakeholder Collaboration - US Customs & Border Protection

Premise behind the initiative

- County leadership committed to the Airport's success
- Local corporate partner





# Stakeholder Collaboration - US Customs & Border Protection

## Process

- Wisconsin BOA as contract partner & main oversight
- Unforeseen delay in opening



# Stakeholder Collaboration - US Customs & Border Protection

## Implementation

- Interior footprint
- Accounting structure
- Preparing for added regulations



# Stakeholder Collaboration - US Customs & Border Protection

## Results

- Usage increasing
- Airport name and marketing
- Engaged CBP leadership & staff
- Reception





# Stakeholder Collaboration - Lake Breeze Aviation

What is an FBO and why the change?

- Fixed Base Operator is responsible for fueling & providing services
- FBOs are the face of the community
- Change was warranted and timing was appropriate
  - Board and stakeholder support
  - Reduce Airport levy reliance



# Stakeholder Collaboration - Lake Breeze Aviation

## Identifying & engaging stakeholders

- Internal
  - County leadership
  - County Board Transportation Committee
- External
  - Sheboygan County Economic Development Corporation
  - Corporate partners
  - Individual hangar tenants
  - Airport Advisory Committee
  - General public
- Consistent message



# Stakeholder Collaboration - Lake Breeze Aviation

## Implementation - Funding

- Eliminate levy subsidy
- Options identified to pay for purchase
  - Fund Balance
  - Capital Plan
- Commitment is being met in Year 1



# Stakeholder Collaboration - Lake Breeze Aviation

## Implementation - Logistics

- FBO location
- Hangar
- IT equipment, software, insurance, procurement
- Staffing
- Fuel service



# Stakeholder Collaboration - Lake Breeze Aviation

## Implementation - Results

- Positive feedback
- Reduced fuel prices
- Welcoming facilities
- Community engagement
- Diversify revenue for Airport





# Looking Ahead

- Perimeter fencing upgrades
- Solar facilities
- Runway 13/31 PAPI replacement
- Continued growth of FBO
- Hangar construction
- Potential long-term projects
  - Sewer & water
  - Ramp expansion





# Thank you



**Emily Stewart**  
**Deputy County Administrator**  
**Sheboygan County**

[emily.stewart@sheboygancounty.com](mailto:emily.stewart@sheboygancounty.com)