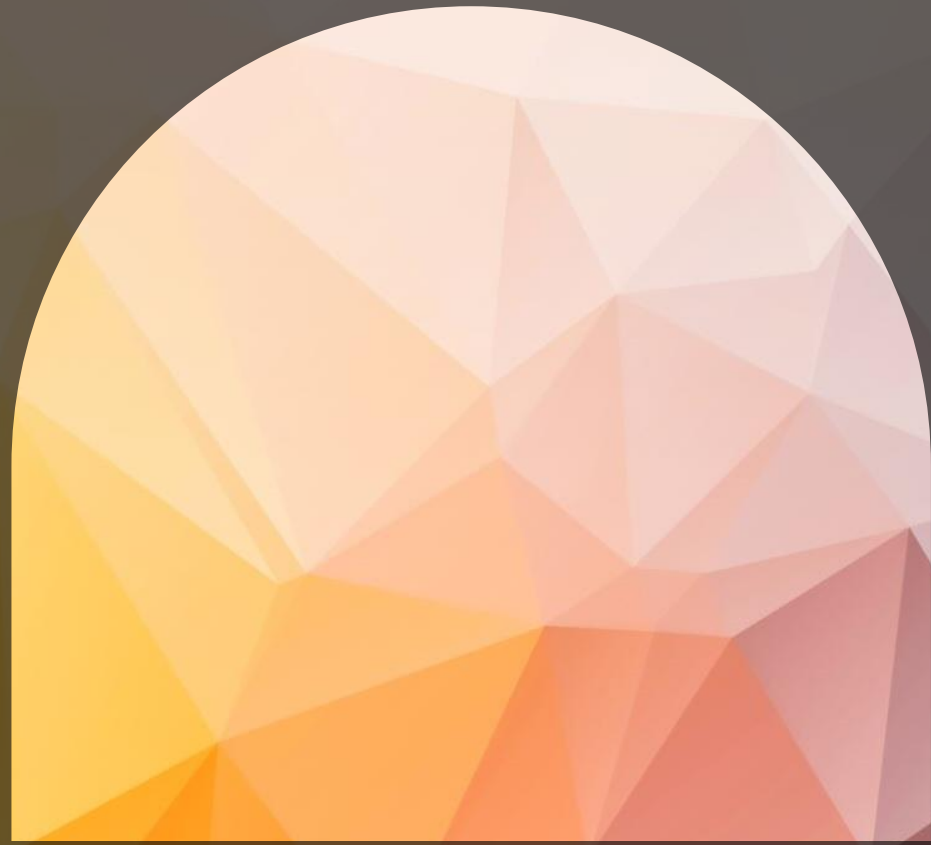


Empowering County Officials

Understanding & Advocating for the
Public Mental Health System

www.wicounties.org

August 20, 2024



AN OVERVIEW

Wisconsin's Mental Health System

State and County Mental Health Services

- Wisconsin Stat. Chapter 51
 - Services provided through a number of state and county programs
 - County role: establishing and administering a behavioral health system to serve their residents
 - State role: distributes state and federal funding to support county services, provides oversight and policy guidance for counties, operates the state's mental health institutes
-

Department of Health Services

Primary responsibility
for state mental health
and substance abuse
programs

Division of Care and Treatment Services

- *Oversees and provides guidance to county mental health and substance abuse programs*
- *Distributes state and federal funds for these services*
- *Operates the state's mental health institutions*

Required County Function

- Services are statutorily required
 - Every county must have a department but services and programs can vary by county
 - Must have an emergency mental health program
 - Must approve emergency detentions
 - Provide treatment to those who lack insurance or cannot afford to pay
-

Provide services in least restrictive environment

Establish emergency mental health services program

Basic
County
Requirements

Keep people out of
extended hospitalizations

Following emergency
detention

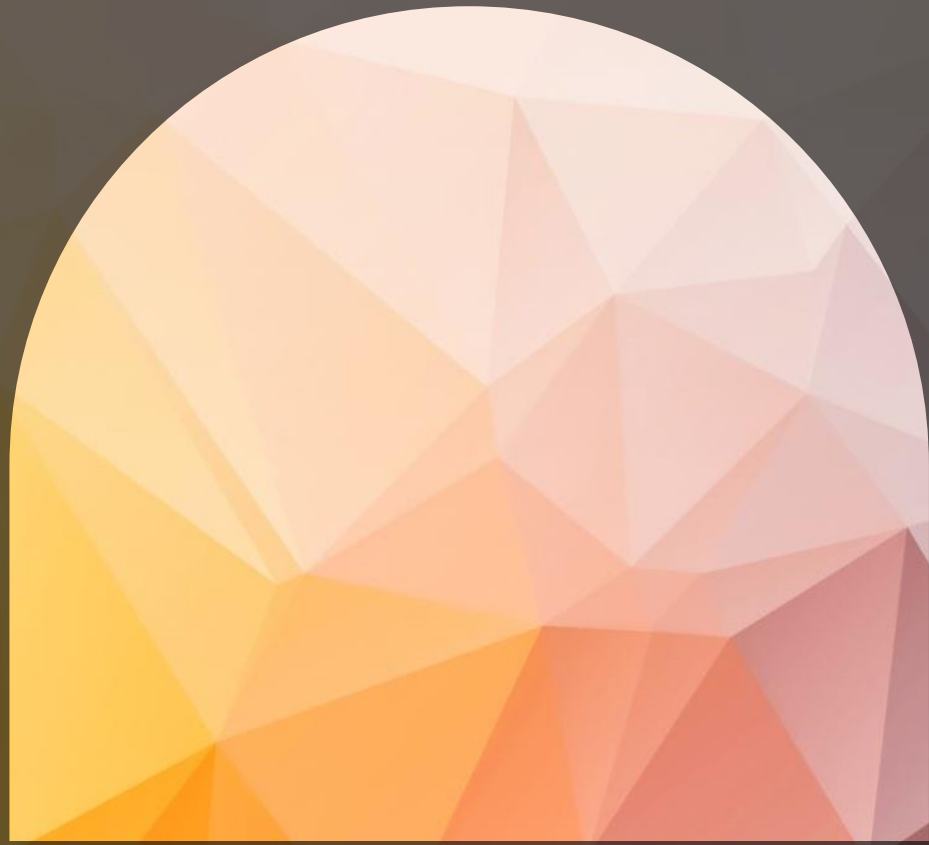
Community
Support
Programs

Counties also provide emergency mental health services

For those who are not Medicaid eligible counties pay the full cost of crisis services



Crisis
Services



JOHN TUOUHY
EXECUTIVE DIRECTOR
WISCONSIN COUNTY HUMAN
SERVICES ASSOCIATION

Funding for Public Mental Health Services in Wisconsin



WCA Request

- Counties pass resolution asking for mental health funding & send to WCA
- Set up meetings to connect with your legislator
Give them a tour
- Share your support for the WCA budget request on mental health

Panel of Professionals

Todd Campbell

Dane County Behavioral Health Division Administrator

Todd Romenesko

Calumet County Administrator

Mary Schwalenberg

Calumet County Supervisor

Dr. William Topel

Winnebago County Human Services Director/WCHSA President

- \$20 million annually to fund the non-federal share of MA CSP services.
- \$21 million annually to fully fund Crisis services statewide and eliminate the MOE requirement for MA reimbursable services.

WCA Request

Talk to your legislators

Help to pass resolution

Stories are important!

QUESTIONS?



THANK
YOU!

CHELSEA SHANKS

SHANKS@WICOUNTIES.ORG