



LEGISLATIVE UPDATE



WCA Government Affairs Team

Kyle Christianson, Partner Wimmer & Company

Dan Bahr, Government Affairs Associate

Marcie Rainbolt, Government Affairs Associate

Chelsea Shanks, Government Affairs Associate

2023-24 Legislative Session

Where Things Stand...

2023-24 Legislative Session

- Divided government dynamic
- State budget process starting
- Politics, politics, politics
- State Finances

2023-24 Legislative Session

Opportunities

- Unprecedented State Surplus
- Acknowledgement of Local Government Challenges
- Bipartisan support for locals
- Engaged membership

2023-24 Legislative Session

Challenges

- Partisan divide
- “One-time” surplus
- Inflation/ Demands from stakeholder
- Tax Cuts

2023-24 Legislative Session

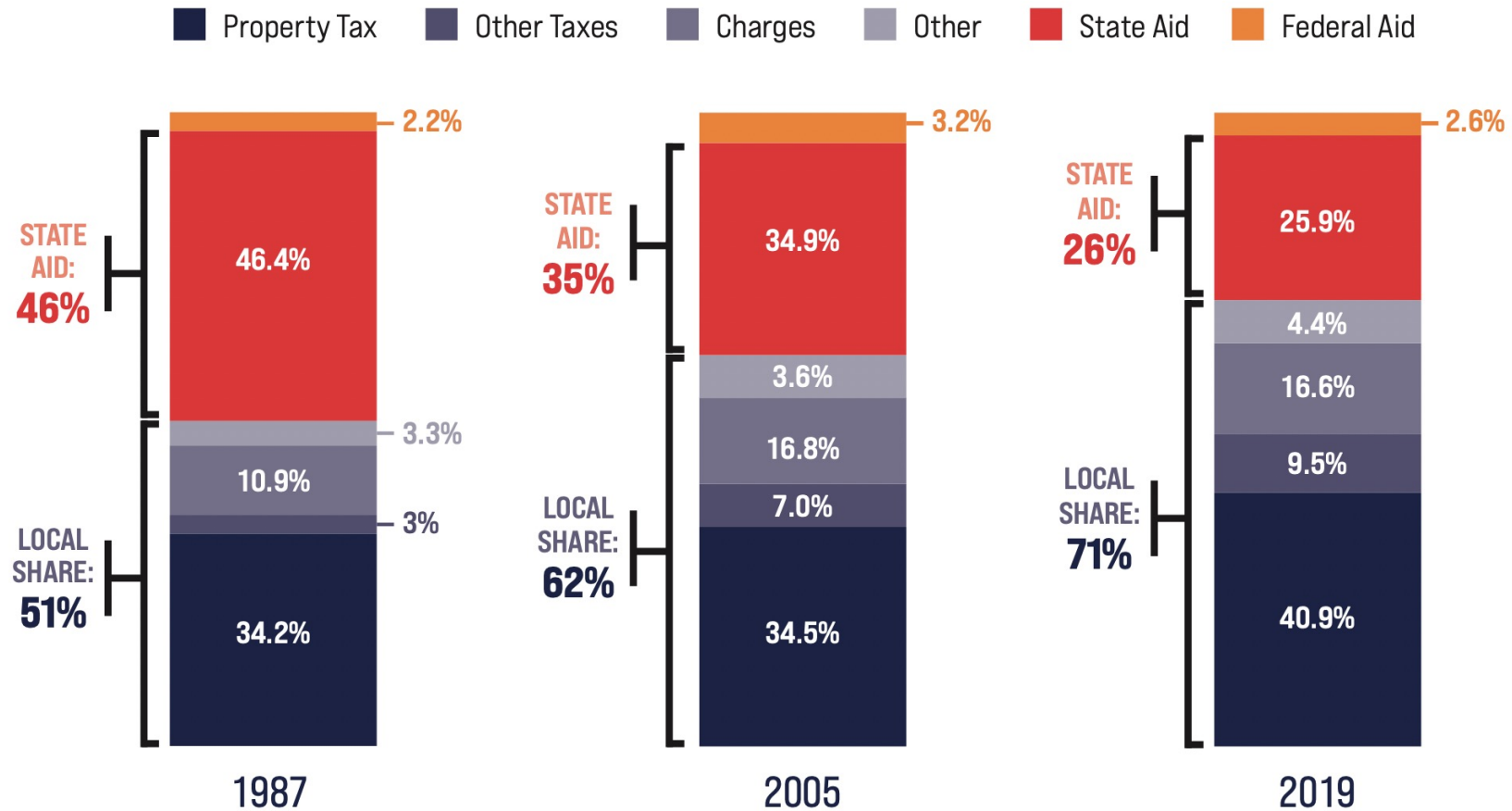
Takeaways

- More work to be done
- Member engagement critical
- Long process
- Balancing JFC and Governor

Taxation and Finance

Taxation & Finance

DECLINE IN STATE SHARE OF COUNTY FUNDING 1987 - 2019



Health and Human Services

Health & Human Services

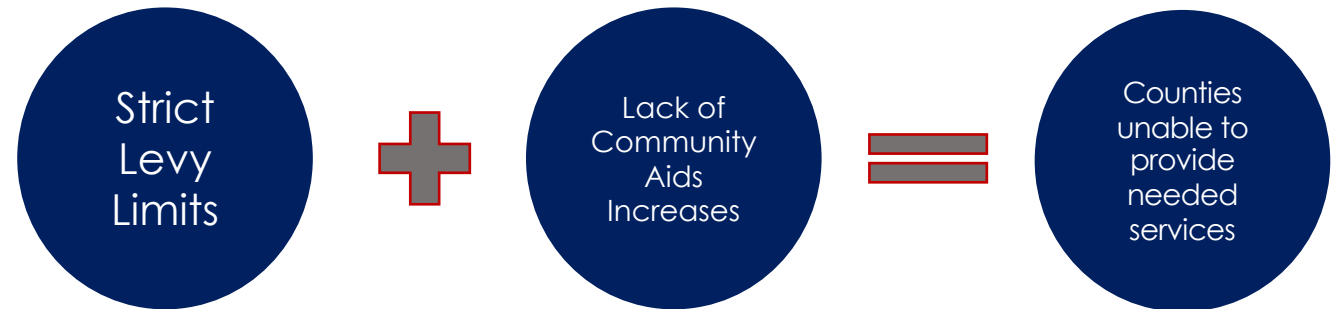
Mental Health Services

Community Support Programs

- Helps keep people out of extended hospitalizations
- Services include:
 - Psychiatric evaluation and assessment
 - Professional assistance with medication care and resources
 - Teaching skills that help people problem solve, deal with stress, understand their illness, and develop new ways to manage and cope with their illness
 - Help navigating employment resources or developing interests that could grow into employment

Health & Human Services

- Crisis Intervention Services
 - Counties required to have emergency mental health services program with 24-hour crisis response
 - Mobile crisis workers (some embedded in sheriff dept)
 - Peer support
 - Crisis stabilization beds
 - Trainings for employees



Health & Human Services

Requested Action:

- \$21M annually for Medicaid reimbursable crisis services
- \$14M annually for Community Support Programs

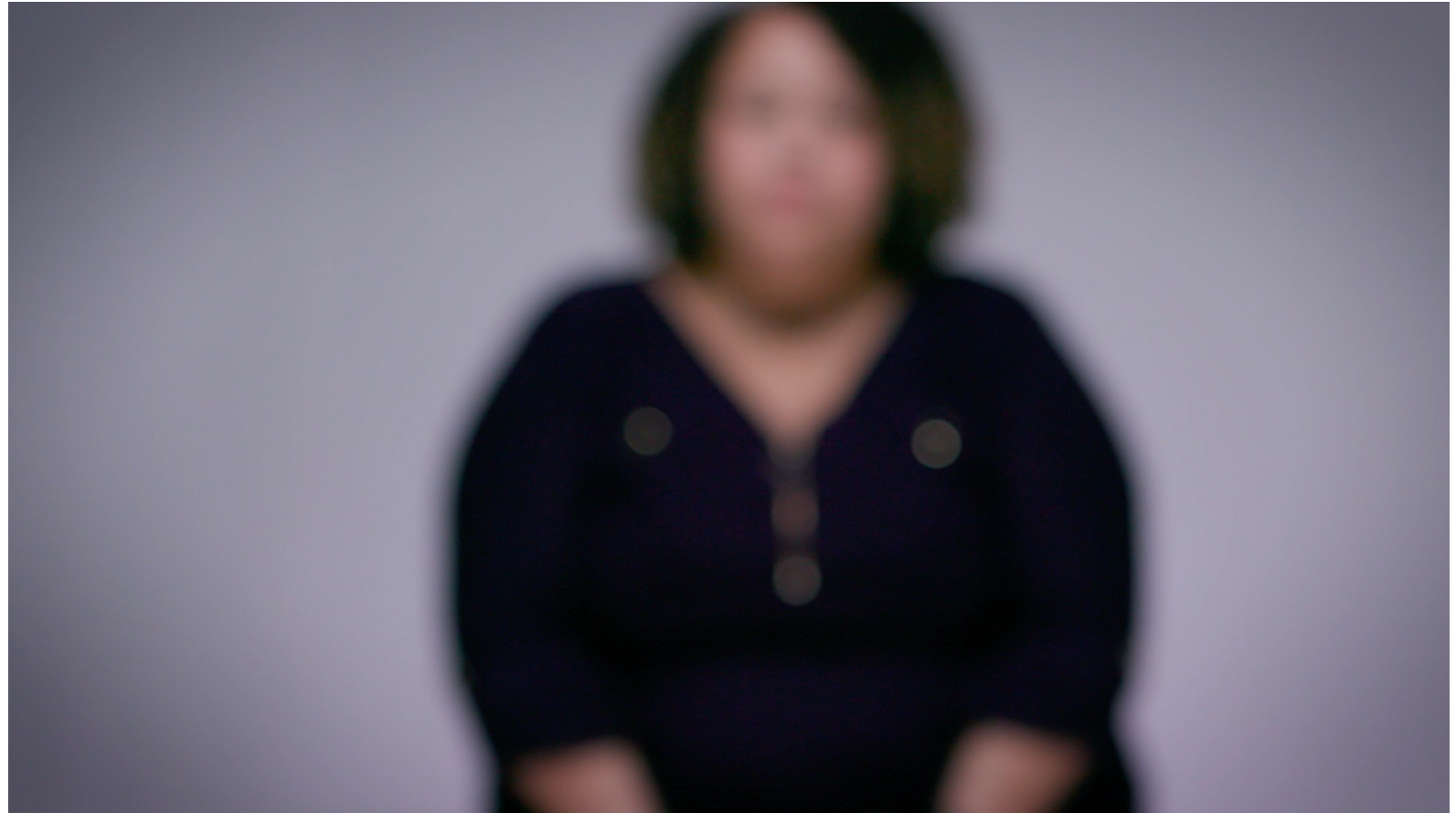
Governor's Budget Includes:

- Community Support Program
 - \$19M GPR in FY 23-24
 - \$20M GPR in FY 24-25

Health & Human Services

1. PSA through WI Broadcasters Association
 - MH awareness for all ages
 2. Digital Advocacy- Social Media
 3. January 2023 *Wisconsin Counties*
 - Mental Health Emergency Services
- Hoping to launch in March

WCA
Mental
Health
Awareness
Campaign



Health & Human Services

Adult Protective Services

- Help elders and adults with disabilities who have been abused or neglected
- County agencies have felt the strain
 - The lack of safe locations for dementia or disabled seniors
 - The lack of adequate funding for people with disabilities
 - The lack of caregivers available
- GPR funding has been at \$7 million since 2006
 - 170% increase in reports of abuse and neglect overall since 2006

Health & Human Services

Requested Action:

- Provide a \$10 million increase in GPR funding to counties for APS
- Develop a statewide central registry of long-term care placement resources that counties can use, rather than each county maintaining its own resource list
- Governor's Budget Includes:
 - \$9.5 million GPR to increase base funding for adult protective services, elder abuse, and domestic violence
 - Funding would also be provided to DHS for training initiatives and technical support (\$1.5M)

Judicial and Public Safety

Judicial and Public Safety

Victim Witness Appropriation

- Every WI District Attorney office is required to employ a victim witness professional
- Statistics from 2021
 - Aided 98,600 victims
 - Aided 216,000 witnesses
 - Average new case referral per victim witness professional
1,332

Judicial and Public Safety

- 2013 Act 20 provided the original funding structure for the victim witness reimbursement appropriation
- Counties are eligible for up to 90% reimbursement from the state for services provided
- Fiscal year 2020-21 reimbursement to counties was at an historic low of 40%

Judicial and Public Safety

- To receive reimbursement counties must do the following:
 - County board must file a reimbursement claim with DOJ;
 - DOJ determines the level of services for which the county will be reimbursed based on the county's staffing level; and
 - The approved level of staffing is determined by the caseload, number of prosecutors, and justified need

Judicial and Public Safety

Stakeholders



Wisconsin Victim Witness Professionals



Judicial and Public Safety

- **Requested Action:**

- \$12 million GPR for the victim witness appropriation or the amount equivalent to reach 90% reimbursement to counties

- **Governor's Budget Includes:**

- \$5,724,700 FY24 and \$6,004,200 FY25 (\$11.7 million over biennium = 90%)

Judicial and Public Safety

Public Safety Answering Points

- State is building the ESInet
 - RFP issued to AT&T
- As of February 2023, 73 PSAPs have signed the participation agreement with the state (54 counties and 19 municipalities)

Judicial and Public Safety

Current Status:

- The PSAP state grant is funded at \$6 million annually
- Allowable grant amount is \$500,000 with up to a 20% local match requirement
- Costs for PSAP upgrades and ongoing maintenance far exceed \$500,000

Judicial and Public Safety

- **Requested Action:**
 - Increased the amount of PFPF dollars used to support the PSAP grant
- Governor's Budget Includes:
 - \$6 million in each year of the biennium

County Organization & Personnel

County Organization & Personnel

Real Estate Transfer Fee

- This fee originated as a 50/50 split state and counties
- In the 80's it was changed to 80/20

County Organization & Personnel

Current Status:

- 2021-22 Real Estate Transfer Fee generated \$151.7 million
 - Counties received \$30,340,000
 - State received \$121,360,000

County Organization & Personnel

Requested Action:

- Revert the real estate transfer fee back to 50/50 split between the state and counties

Transportation and Public Works

Transportation and Public Works

General Transportation Aids (GTA)

- Distributed to all counties and municipalities to assist in the maintenance, improvement, and construction of the county trunk highway system
- Payments are divided among all local governments based on either a percentage of eligible highway-related expenditures or a per-mile payment, whichever is greater
- GTA is often used to offset the cost of constructing roads, filling potholes, plowing snow, grading shoulders, marking pavement, and repairing curbs and other transportation services

Transportation and Public Works

Current Status:

- Counties received an increase in annual GTA payments statewide from \$122.2 million in 2019-21 budget to \$127.1 in the 2021-23 biennial budget
- Counties will receive the full \$127.1 million in annual GTA distribution payments in 2023

Transportation and Public Works

Requested Action:

- WCA requests a 10% increase in funding for the county GTA appropriation to reflect the backlog of maintenance on the county trunk highway system
- Governor's Budget Includes:
 - An 8% increase for the program which would bring the annual funding level to \$137,514,800 by FY25

Transportation and Public Works

Local Road Improvement Program-Supplemental (LRIP-S)

- Established in the 2019-21 biennial budget by the Joint Committee on Finance with a surplus in dollars available to the committee in the state budget
- The initial idea behind this concept was for this program to be a one-time infusion of state surplus revenue dollars to be used to support local “shovel ready projects” as requested by counties, municipalities, and towns
- Following the establishment of the LRIP-S, the popularity of this program exploded, and Governor Tony Evers appropriated \$100 million dollars for this program in his 2021-23 biennial budget proposal
- After two successful budget cycles, LRIP-S continues to be very popular. The program has supported local projects all around the state and can be seen as a prime example of the positive relationship that still exists between the state and local governments

Transportation and Public Works

Current Status:

- The 2021-21 biennial budget included \$100 million dollars in LRIP-S

Transportation and Public Works

Requested Action:

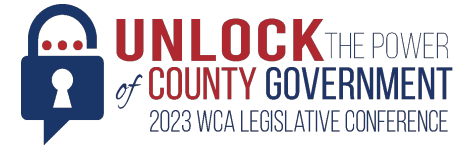
- The WCA requests \$200 million be appropriated for LRIP-S annually
- Governor's Budget Includes:
 - Making LRIP-S an ongoing rather than a one-time program

Agriculture, Environment & Land Use

Agriculture, Environment & Land Use

County Conservation Staffing and Cost Sharing Grants

- County conservation staff:
 - Are “partners in agriculture” with landowners, farmers and industry leaders
 - Will be the primary local implementers of the state’s phosphorus management program to clean up lakes, rivers, and streams
 - Work directly with farmers to avoid contamination of drinking water supplies
 - Work on the front lines to manage resource challenges, often serving as “first responders” in the case of floods, droughts, and other emergencies



Agriculture, Environment & Land Use

- Provide construction oversight and assistance to large-scale livestock operations to ensure operator compliance with state agricultural performance standards
- Provide educational and technical assistance to help farmers meet state agricultural performance standards and county livestock licensing requirements
- Help farmers secure permits for manure storage and other regulated activities, and in the process ensure compliance with standards that protect drinking water

Agriculture, Environment & Land Use

Current Status:

- The 2021-23 biannual budget increased funding for the program with one time funding to over \$11 million per year in both years of the budget cycle
- Base funding for the program was increased in the 2017-19 biennial budget by \$900,000 bringing the base funding level to \$8,964,100 annually. This number is well shy of the number needed on an annual basis to sustain program viability

Agriculture, Environment & Land Use

Requested Action:

- Increase base funding for the program
- Governor's Budget Includes:
 - Increase in base funding for the program to \$15.1 million in FY24 and \$15.7 million in FY25



LEGISLATIVE UPDATE



WCA Government Affairs Team

Kyle Christianson, Partner Wimmer & Company

Dan Bahr, Government Affairs Associate

Marcie Rainbolt, Government Affairs Associate

Chelsea Shanks, Government Affairs Associate