

A group of youth, mostly teenagers, are outdoors in a wooded area. They are wearing light blue t-shirts with a logo that includes the text "Journey to..." and "Camp 2021". They are all performing a hand gesture, with their hands raised and fingers spread. In the top right corner, there is a white outline of a shield-shaped crest containing a large letter "W".

UW-Madison Division of Extension

Karl Martin, Dean and Director

Matt Hanson, Assistant Dean South Zone

Catherine Neiswender, Assistant Dean North Zone

Colleen Bates, WEXA President

Heidi Johnson, Agriculture Institute Director

Topics

1. Extension-Counties Partnership Document
2. WEXA Update
3. Future Staffing Considerations
4. Budget & Other Updates





1 Extension-Counties Partnership Document

Partnership Document

- WEXAWisconsin.org; click on “resources” tab
- Foundation for new Extension committee member, county board member, or the general public
- Outlines the benefits and responsibilities of the partnership between Extension and counties
- Developed with input from Wisconsin Counties Association Executive Committee representatives and input from additional counties





2 WEXA Update

WEXA Update

- Association development
- Annual/district meetings



An aerial photograph of a vast, green agricultural field. In the center-right of the image, a red tractor is visible, moving through the field. The field is divided into sections by thin, dark lines, likely furrows or rows of crops. The overall color is a vibrant green, with some darker patches indicating different stages of growth or soil types.

3 Agriculture Outreach: Staffing and New Opportunities

Sample Footer Text

New, State-Funded Outreach Specialists: Targeted Needs

Swine Production

- Management
- Nutrition
- Reproduction
- Genetics
- Health & Welfare

Commercial Vegetables

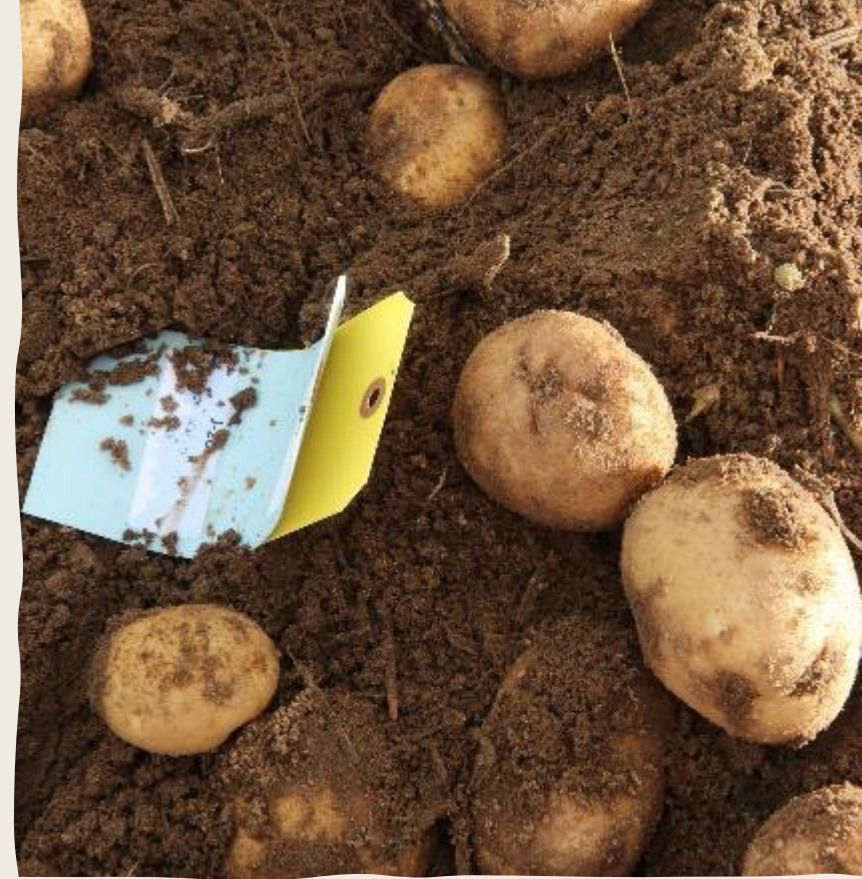
- Pest, Nutrient, & Irrigation
- Disease
- Water Quality

Beef Production

- Management
- Nutrition
- Reproduction
- Genetics
- Health & Welfare

Grazing

- Plans
- Inventories
- Feed & Forage
- Watering
- Fencing



New, State-Funded Outreach Specialists: Statewide Needs

Farm Management

- Labor & Workforce
- Business Development

Water Quality

- Agricultural Emphasis



CALS Extension Faculty

In Hiring Process

- Biological Systems Facility and Environmental Control Engineer
- Forage Systems Agroecologist
- Precision Pest Ecologist

Future Hiring

3-4 additional faculty through current position prioritization process



Areas of Extension Strength

- Direct engagement
- Tools to address specific topic areas
- Targeted collaboration between industry, faculty, and outreach specialists
- Regional outreach to producers



Service to Agriculture

- Ag industry has changed a lot in 100 years, but Extension has the same staffing response
- Farms have become highly technical requiring highly trained individuals
- Farms are critical to local economies & jobs
- We're all dedicated to making farms and producer operations successful for communities





This is what we hear

We need specialized help from someone who understands and knows the research on innovative technologies for my farm

This is how we respond

Layer expertise across counties by investing in experts who can focus and develop valued solutions on specific aspects of agriculture

A Fresh Approach

Outreach Specialists

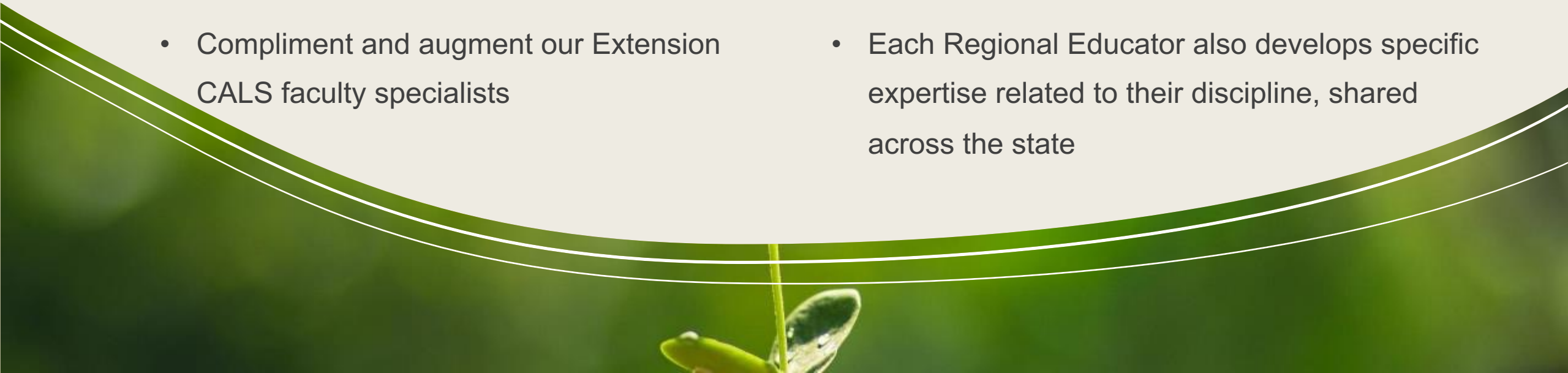
Funded by Extension/State and other alternative mixes of funding

- New state budget positions & several more
- Provide specific content knowledge to stakeholders across a broader geography
- Compliment and augment our Extension CALS faculty specialists

Regional Educators

Co-funded positions between Counties and Extension

- Focus on Dairy, Crop production
- Covering 3-8 counties, depending on density of industry
- Each Regional Educator also develops specific expertise related to their discipline, shared across the state





4 Extension Updates

News from Extension

- State biennial budget
- Other updates





Discussion

extension.wisc.edu