



Enbridge in Wisconsin
Working Together to Fuel Our Future
Wisconsin Counties Association 2019 Annual Conference

Why we're here today

Building relationships with public officials



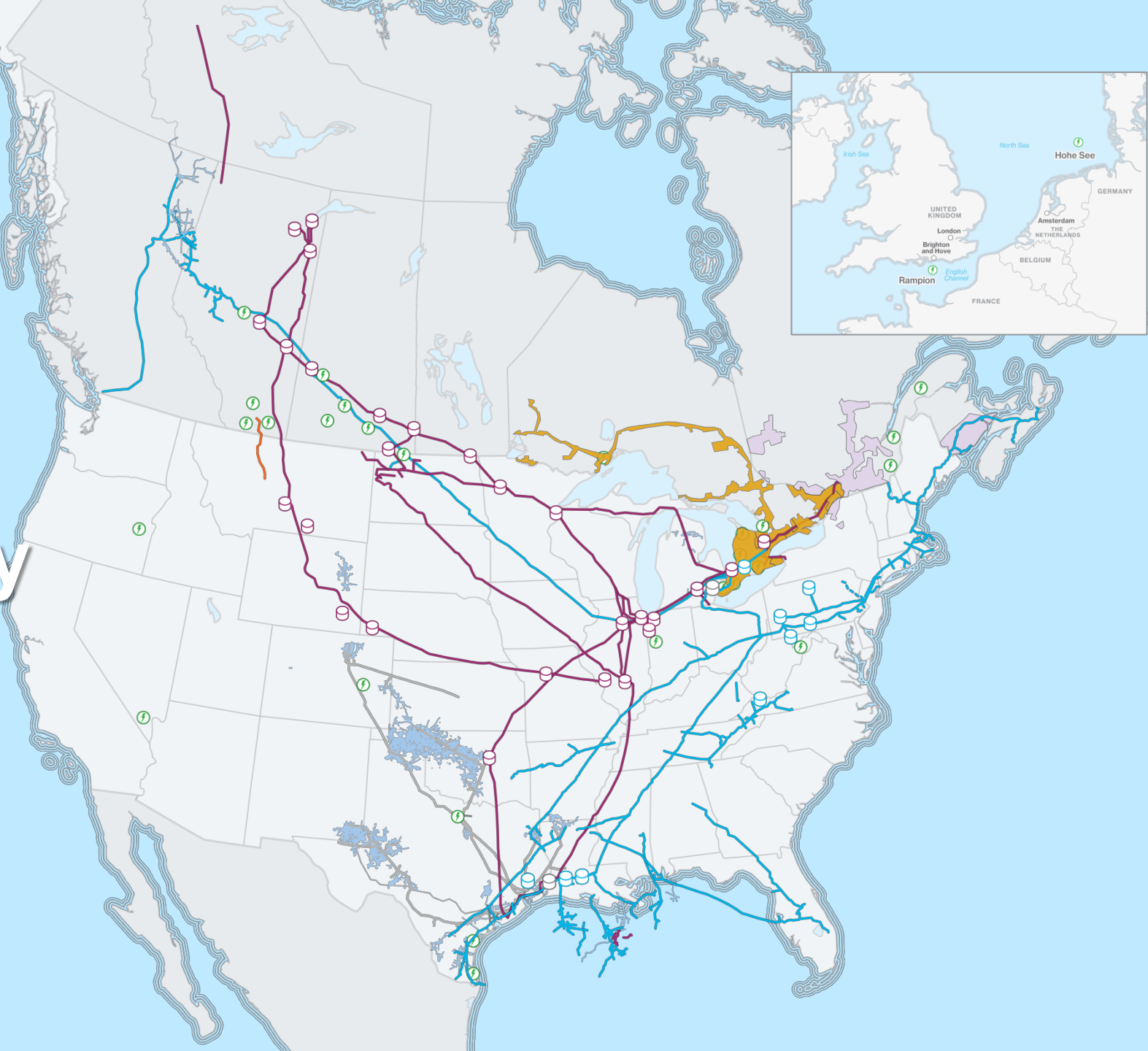
Enbridge is committed to being a good neighbor and working closely with people who live in the communities where we have pipelines.

We aim to build meaningful, long-term relationships and look for opportunities to collaborate with stakeholders in communities along our right-of-way.

We know that our work often intersects with local and county level officials and that strong working relationships are required.

Enbridge Story

A leading
energy delivery
company in
North America



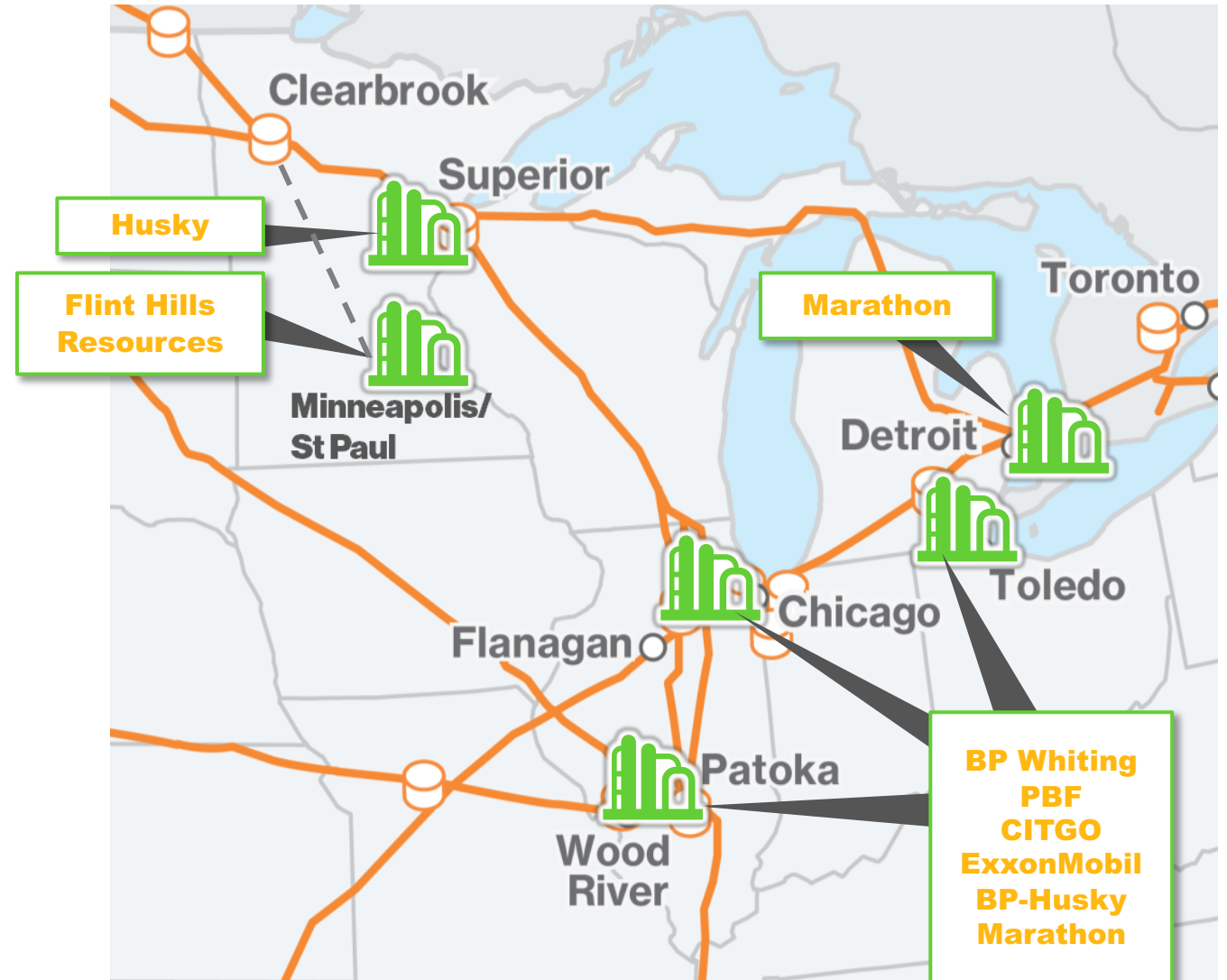
A Vital Link to Energy Supply

Enbridge plays a critical role in meeting the crude oil needs of both Wisconsin and the Midwest.

Enbridge meets

100%

of Wisconsin refinery crude oil needs each day



More than gasoline...

Everyday products made from refined petroleum



Enbridge transports more than 80 liquid petroleum commodities that are refined into products we all use every day.



Heavy grade crude produces...

- Fertilizers and plastics
- Heating oil and lubricants
- Asphalt for roads, roofs, runways

Light grade crude produces...

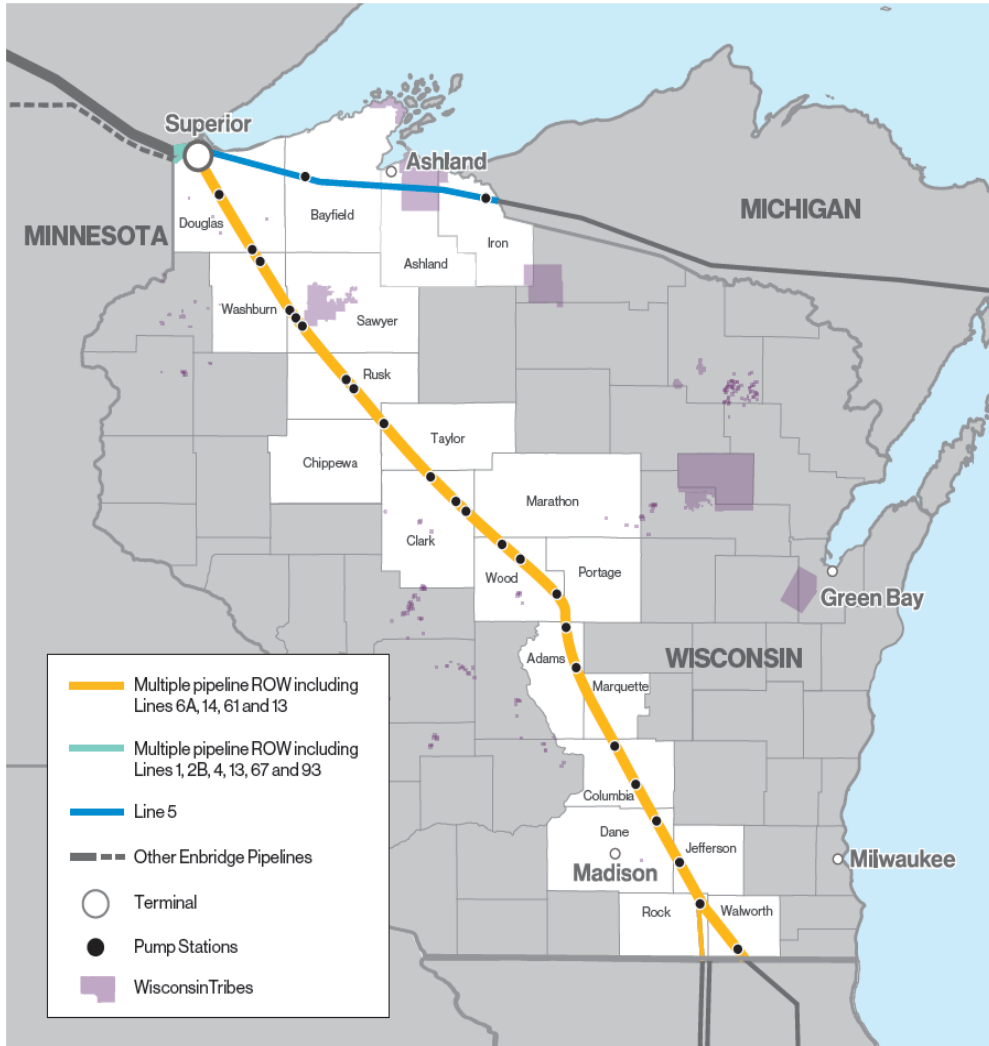
- Gasoline
- Diesel fuel
- Jet fuel

Enbridge In Your Community

Proudly operating in Wisconsin since 1949



Enbridge in Wisconsin Pipelines and Facilities



- **10 pipelines** – energy to fuel vehicles, power industry and heat homes
- **Nearly 300 employees**
- **\$43 million** annual property taxes paid to the state of Wisconsin in 2018
- Capital, operating, and administrative **expenditures in Wisconsin totaled \$486 million in 2018**

Consider the Alternative

Pipelines are the safest and most efficient way to transport the energy we all use everyday



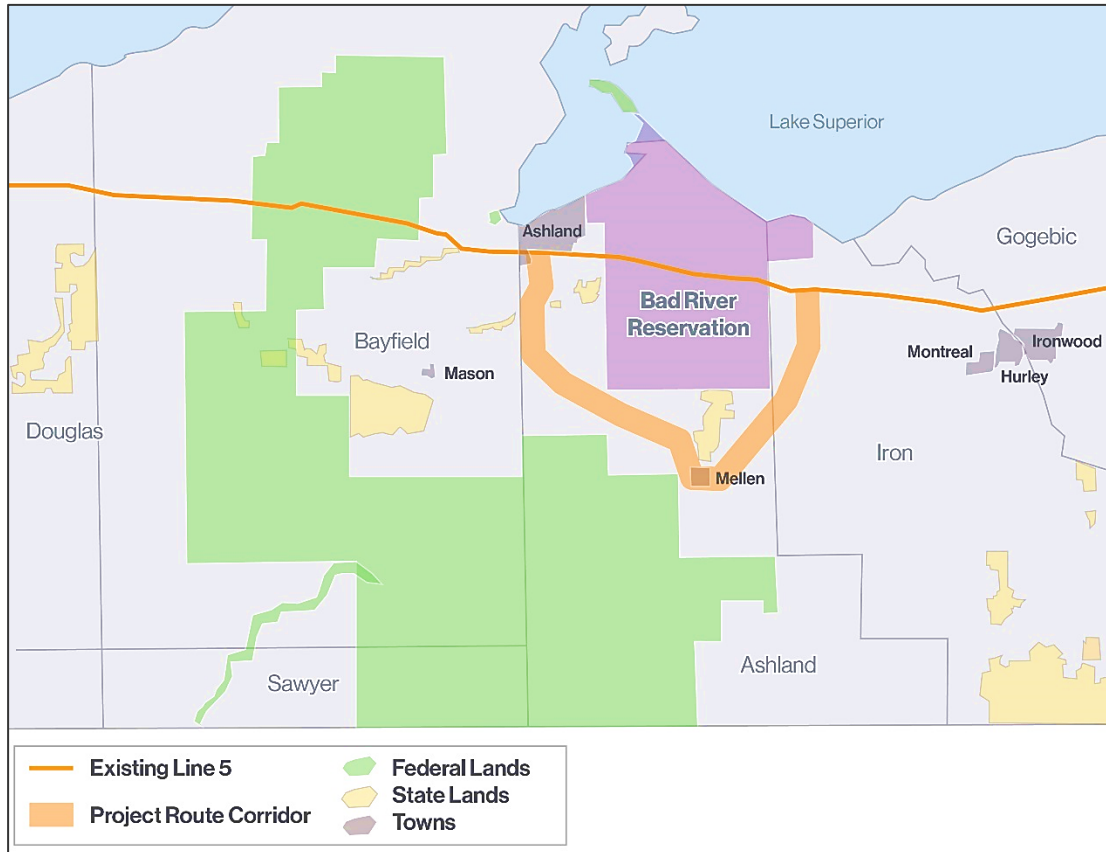
Enbridge pipelines transport about **2.8 million barrels** of petroleum products across North America everyday

That is the one-way equivalent of approximately **8,500 tanker trucks**

That is the one-way equivalent of approximately **3,500 rail cars**

Potential Line 5 Reroute

Line 5 in Northern Wisconsin



- Vital link to propane and other energy supplies for the upper Midwest
- Safely operating across northern Wisconsin since 1953
- Reroute evaluation underway in response to Bad River Band of Lake Superior Chippewa Tribe request to relocate Line 5 off of reservation
- Early stages of evaluating reroute options:
 - Primary study corridor identified
 - Civil and environmental studies being conducted
 - Public outreach initiated
- In communication with Band to maintain safe and reliable operation of the pipeline

Sustainability at Enbridge

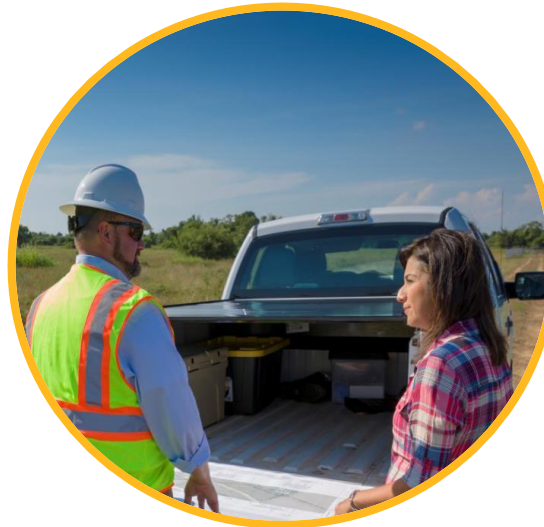
Sustainability is core to how we do business

Safety & Environmental Protection



Our business depends on our ability to safely, reliably and affordably deliver the energy people need and want while protecting the environment.

Stakeholder & Indigenous Inclusion



Our long-term success depends on our ability to build effective, mutually beneficial relationships with the people living near our operations. Our approach is grounded in our commitment to work hard to foster open, transparent and meaningful dialogue.

Climate Change & Energy Solutions



Enbridge is uniquely positioned to help bring new lower-carbon solutions to scale in both Canada and the U.S. while continuing to meet the demand for safe, reliable and affordable energy.

Safety and Environmental Protection

Protecting what matters most



Our Proactive Approach to Safety

Preventative measures and the pipeline right-of-way



Operational Excellence

Our top priority is for the safety of our employees and for the communities in which we operate



We invested
\$1.1+ B

2018 to help us maintain the integrity and reliability of our pipeline systems

We performed
29,000 +

pipeline integrity inspections in 2018 on our liquids and natural gas pipelines and distribution network

We monitor our lines
24.7.365

with people and multiple computerized leak detection systems

We held
300+

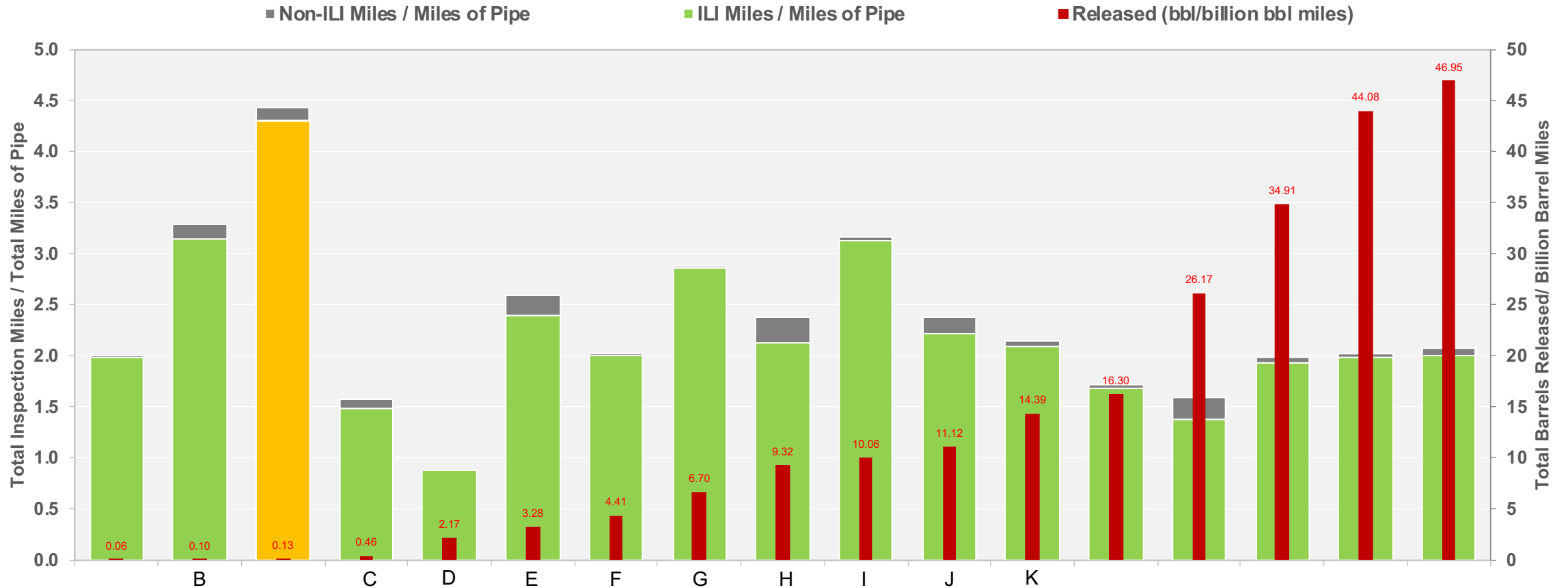
emergency exercises drills and equipment deployments in 2018

Operational Excellence



Our industry leading pipeline integrity inspection program has resulted in one of the lowest release rates per volume of liquids transported

Enbridge Integrity Performance Benchmarking - 2014-2017



Stakeholder and Indigenous Inclusion



Working with County Officials

Partnerships built on trust and communication



- Engage
- Inform
- Involve
- Communicate
- Listen

Working with Local Emergency Responders

A culture of safety



Investing in Our Communities

Our commitment to communities along our corridor

Community Investment:

- Social, cultural and educational
- Environmental stewardship, energy conservation and awareness

Safe Community Grants:

- In 2018, more than \$173,000 was donated to Wisconsin communities through our Community Investment Program

Enbridge and Kwik Trip – Fueling Wisconsin Promotions



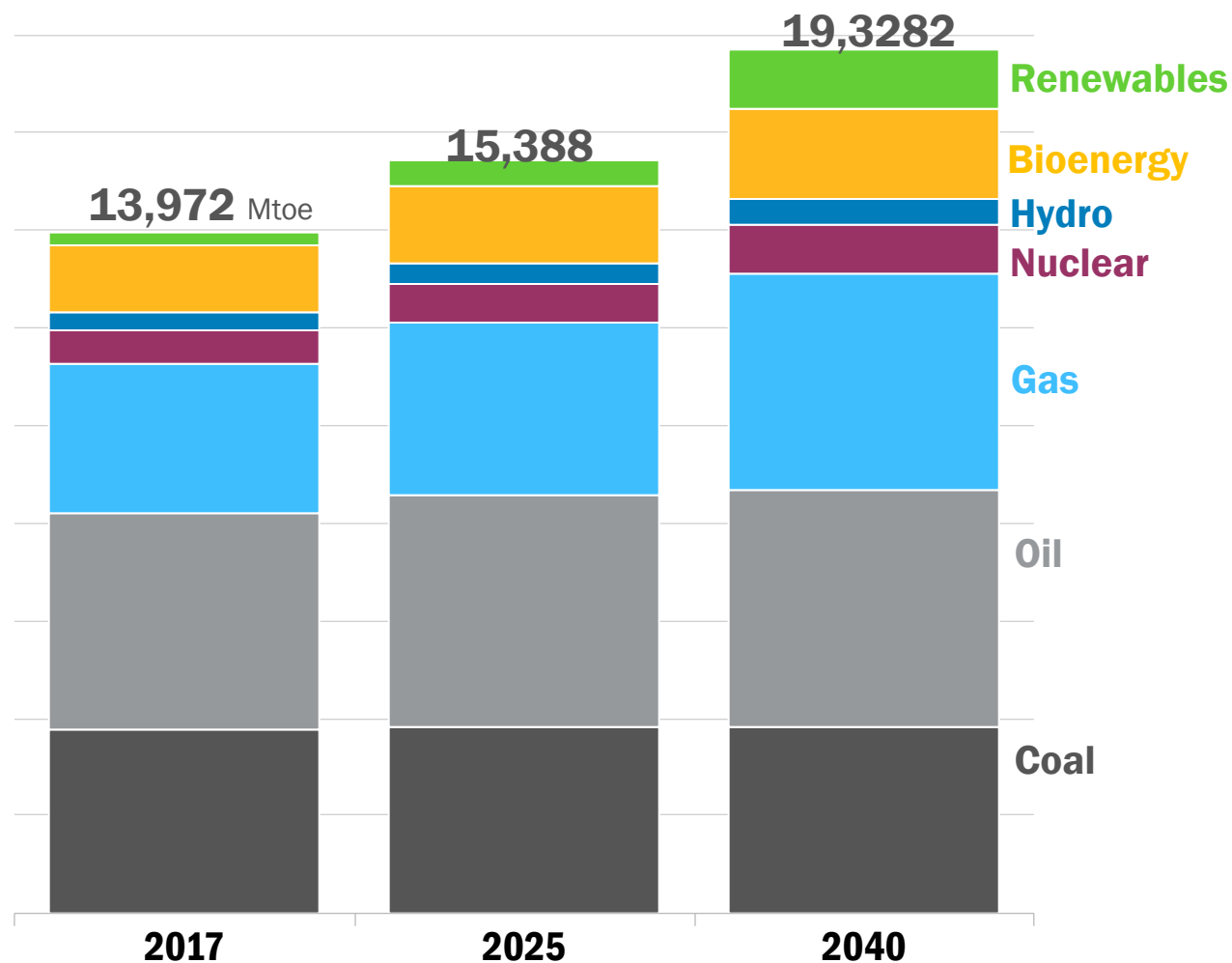
Climate and Energy Solutions

Moving toward a low carbon future



Energy Demand

Global Energy Fundamentals



- Enbridge business strategy supports the transition to a low carbon economy and considers climate-related risks and opportunities with evolving fundamentals
- Our asset mix supports market diversification and changing consumer preferences
- Oil and natural gas are expected to account for almost half of all global energy demand

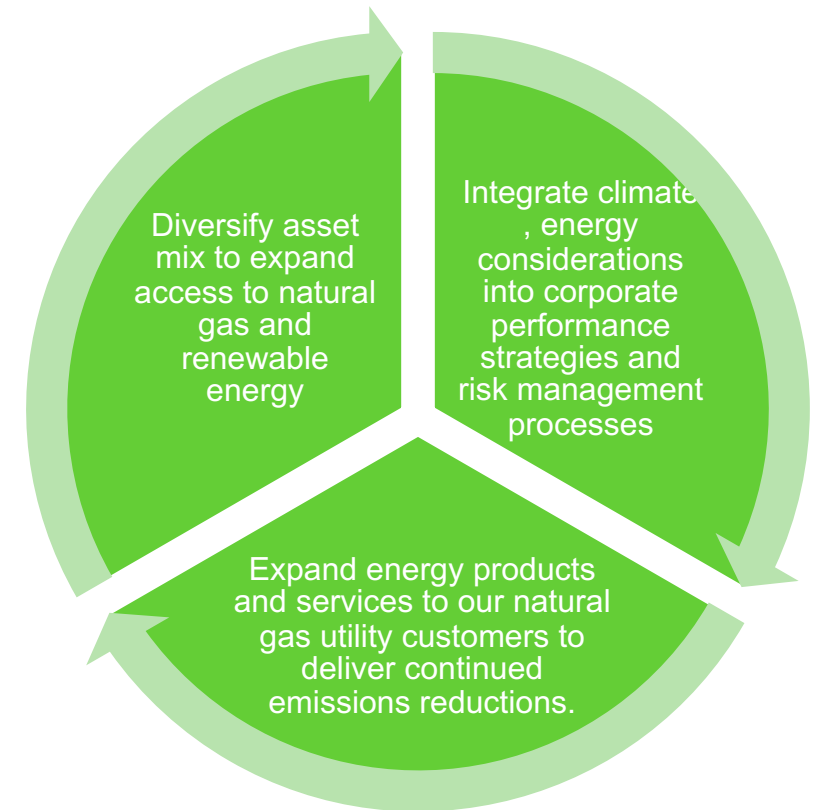
Positioning for the Low Carbon Future

Our energy transition business strategy

Enbridge's business strategy is robust across a variety of scenarios, all of which point to a transition to a lower carbon economy

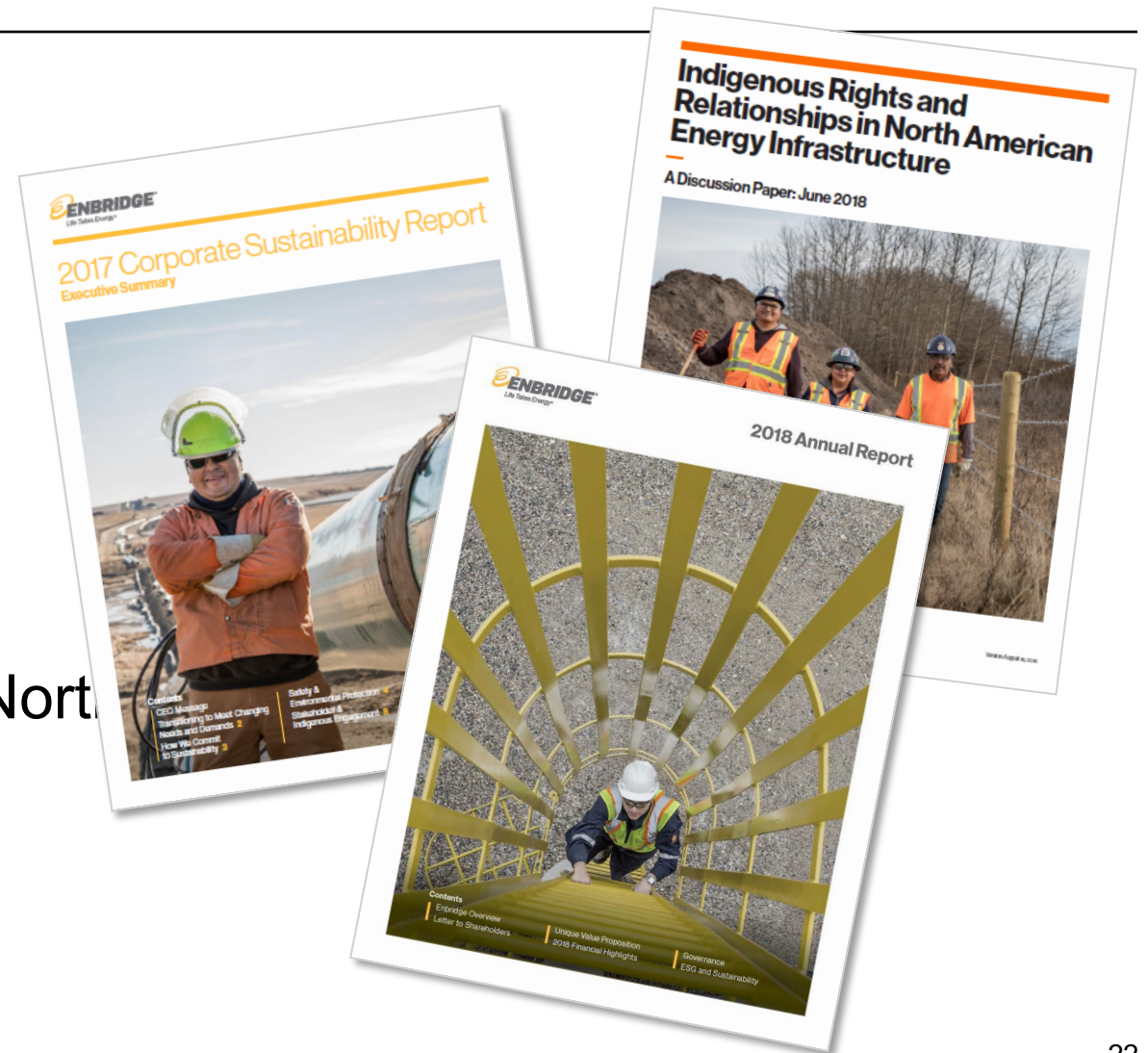
- Key drivers of the energy transition include:
 - Technology - accelerating both improved energy efficiency and lower carbon intensity
 - Public policy
 - Consumer preferences that drive corporate behavior
- Our Climate Policy provides guidance on Enbridge's efforts to take a leadership role in the transition to a lower carbon economy

Climate Strategy



Communicating Our Policies and Performance

- CSR Policy
- Statement on Business Conduct
- Indigenous Peoples Policy
- Climate Policy
- 2018 CSR & Sustainability Report
- 2018 Safety Report
- Indigenous Rights and Relationships in North American Energy Infrastructure – A Discussion Paper



In Review

- **Vital link to North American energy supplies**
- **Experienced company with a long history in Wisconsin**
- **Committed to safe and reliable operations**
- **Investing in local communities where we operate**
- **Positioned to support a lower carbon future**



We understand that your

Life Takes Energy

And we are proud to bring it to you.



www.Enbridge.com/Wisconsin