

The Digital County – Taking the Technology Bull by the Horns

WCA Webinar

January 21st, 2019



What We Will Talk About Today

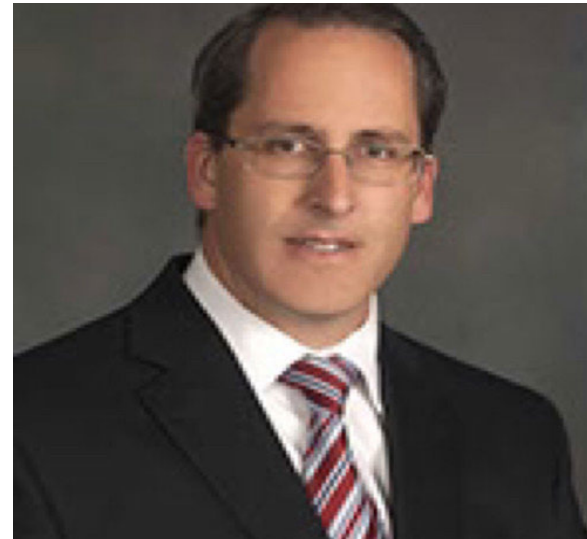
- What is the Great Transformation?
- How will it Impact Government?
- What is the Digital County Effort?
- What are Key Outcomes?
- Where is the Journey Going?

Presenters



Oliver Buechse

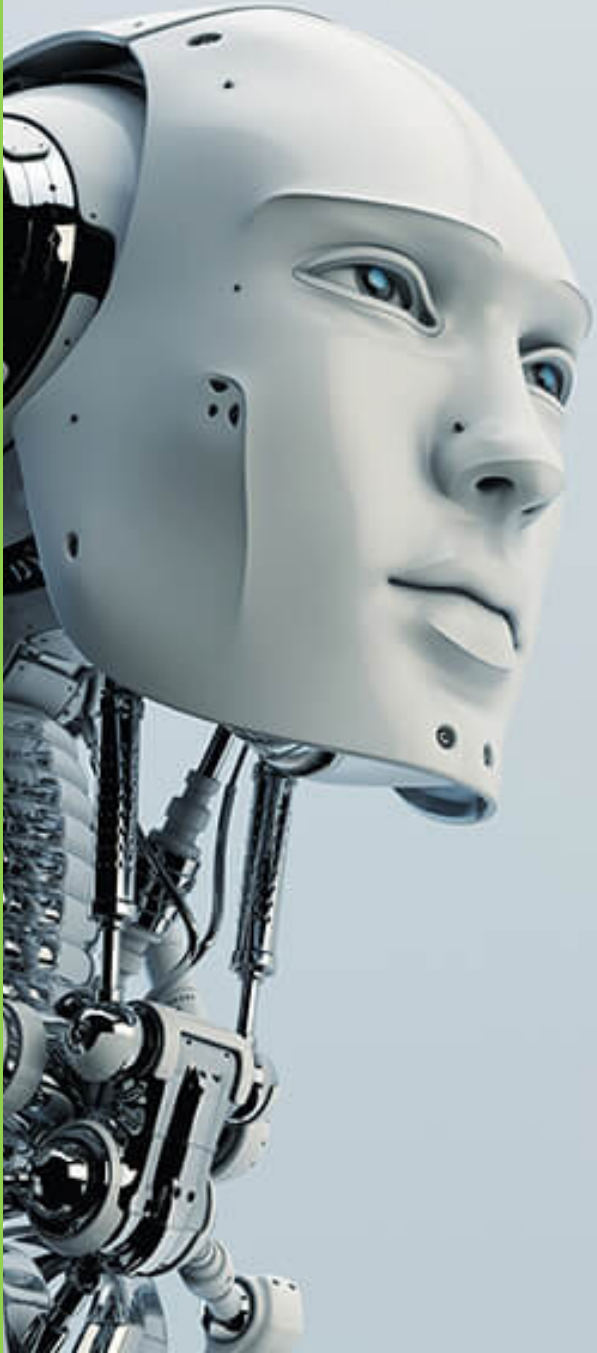
Founder of My Strategy Source
co-Founder of Advancing AI
Wisconsin



Troy Streckenbach

Brown County Executive
Member of the Board of Directors
of Advancing AI Wisconsin

What is the Great Transformation?



Waves of Digital Disruption are Posing a Challenge

Edge Computing

5G Wireless

3D and 4D Printing

Autonomous Transportation

Augmented and Virtual Reality

Artificial Intelligence, Blockchain, Internet of Things

The Cloud, Digitization of Content, Accelerating Device Capabilities

The Internet, e-Commerce, Mobile Devices and Social Media

Microchips, Mainframes, Personal Computers

In the U.S., a new wave of investment in automation may reach \$8 trillion. By the end of 2020s, automation may eliminate 20-25% of current jobs (Bain, 2018)

What is Artificial Intelligence?

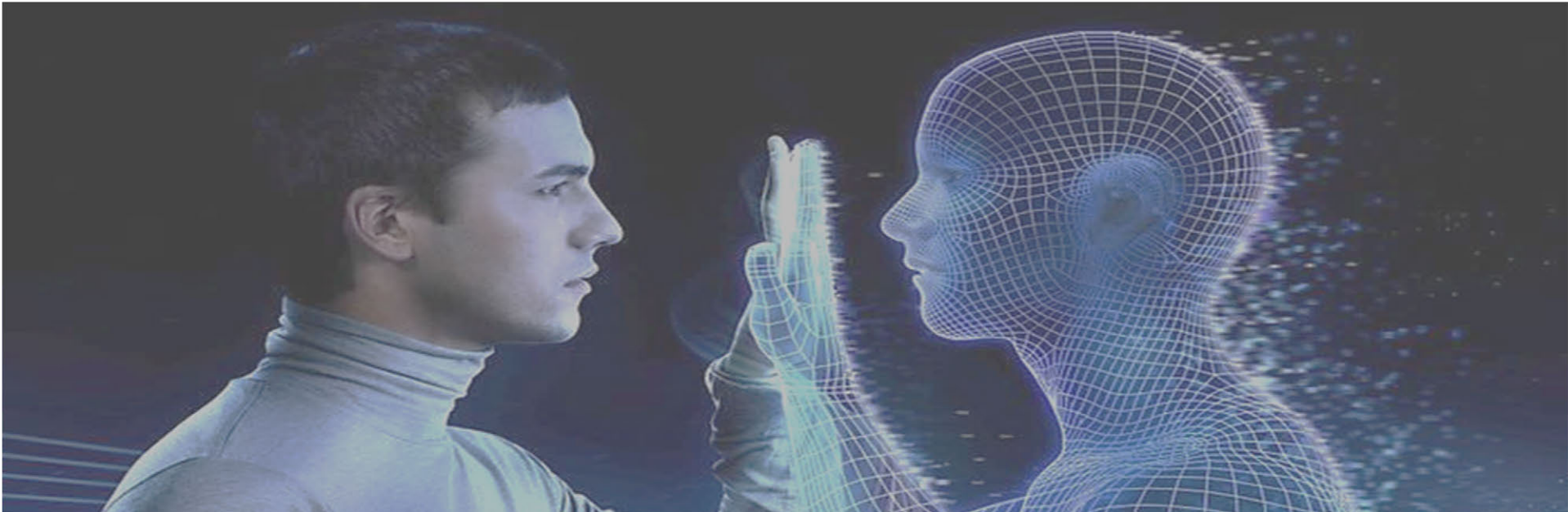
“Technologies that seem to emulate human thinking and action”

Like Human

- Uses natural language
- Perceives sensory input
- Learns from experience
- Executes nonroutine tasks

More Than Human

- Quickly analyzes high volumes of data
- Detects patterns more accurately
- Works 24/7
- Doesn't get bored (yet)



Experts are Predicting Massive Change

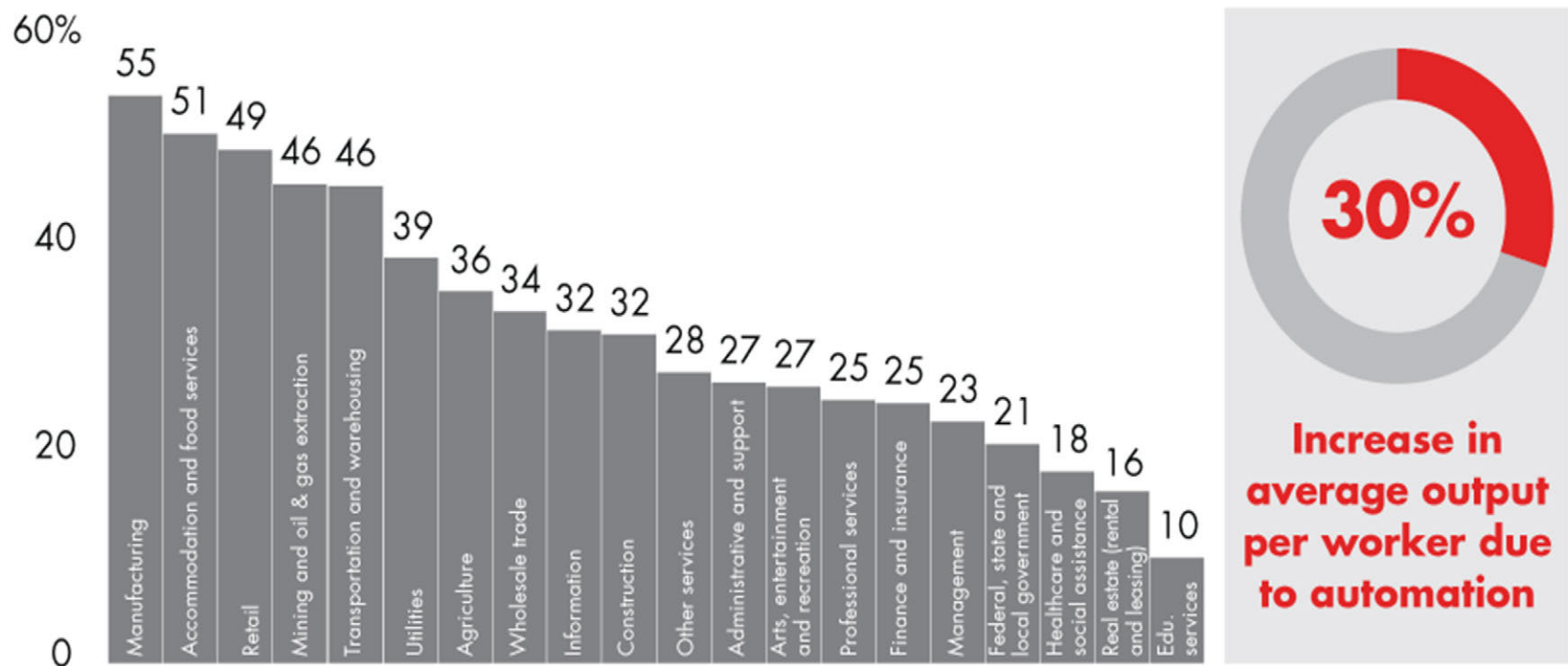
“The speed of current breakthroughs has no historical precedent. When compared with previous industrial revolutions, the Fourth is evolving at an exponential rather than a linear pace. Moreover, it is disrupting almost every industry in every country.”
(Klaus Schwab, Founder and Executive Chairman, World Economic Forum).

Automation will improve productivity and address demographic worker shortages

Figure 18

- Productivity gains from automation will vary broadly across industries by about 10% to 55%

Automation-driven labor productivity growth, 2015 vs. 2030



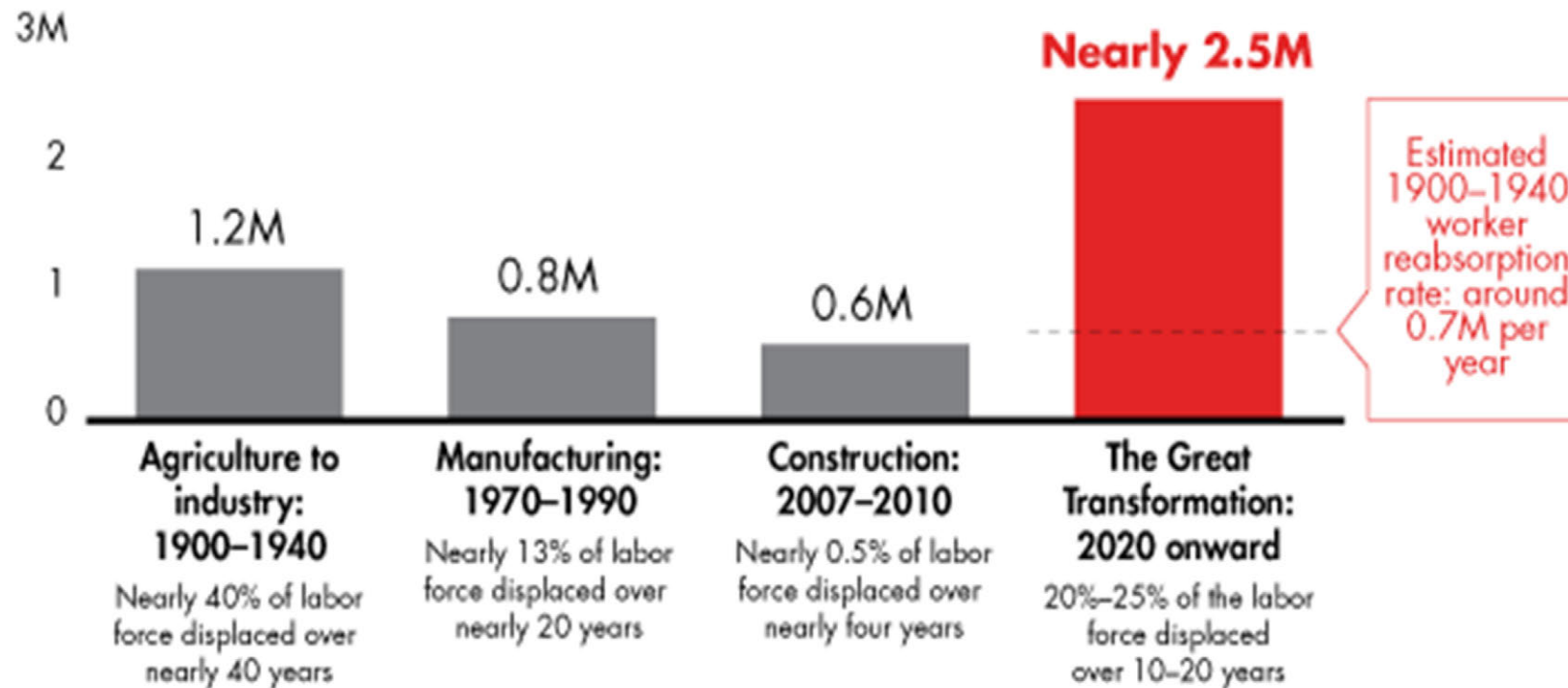
Notes: Labor productivity measured in dollars of gross output per employee; projections do not include baseline forecasts of labor productivity growth
Sources: US Bureau of Economic Analysis; US Bureau of Labor Statistics; Bain Macro Trends Group analysis, 2017

Scale and Speed of Adoption matters as displaced workers re-skill for new employment

Figure 27

US service sector automation could displace labor two to three times more rapidly than previous transformations

Average annual workers displaced, scaled to the size of the 2016 total labor force



Note: Reabsorption rate calculated based on estimated average annual reabsorption of displaced agricultural workers from 1900 to 1940
Sources: US Census Bureau; US Bureau of Labor Statistics; Bain Macro Trends Group analysis, 2017

How Will it Impact Government?



The Role of Government in the Great Transformation



Legislation and
Regulation

Utilize Technology
to Improve
Services

Foster Successful
Adoption

Sample Legislation Challenges

Legislation and Regulation

- What rights do consumers have to their data?
- When AI makes a decision, who is liable for the consequences?
- What are ethical uses of Artificial Intelligence?

Data Scandals



June 2018, 92 million records breached



January 2018, 1.1 billion records breached



June 2018, 340 million records breached

Sample Opportunities to Leverage Technology

Utilize Technology
to Improve
Services

- How can citizens interact with the Government and obtain information?
- How can Administrations learn from successes and failures?
- How can problems and solutions/ resources be optimally matched?

Customer Preference is Moving Towards Digital

44% of shoppers prefer to use chatbots rather than speak to a live agent

90% of consumers expect a consistent experience across channels

84% of customers try to find the answer to their question using a brand's self-service application.

By 2020, 85% of Customer Relationship interactions will be through an AI powered service

Source: Nuance Communications, Gartner

Examples of Governments Supporting Change

Foster Successful Adoption

- What data infrastructure will regional ecosystems require?
- How can Governments initiate Public Private Collaborations?
- What tone can you set for talent in your area of responsibility?

What is the Digital County Effort?



What is the Digital County Effort?

12 Participating
Counties with over
150 Individuals

14 Use Cases to
be Reimagined

3 Events to Create
Ideas for Tomorrow

Who Was “The Digital County”

180 Participants,
Counties and
Experts

- County employees from the frontlines to leadership roles
- Technology Experts to share their knowledge and facilitate sessions
- WCA and other Sponsors enabling the event

Sponsor Recognition

EVENT PARTNER



PLATINUM SPONSORS



GOLD SPONSORS

Fond Du Lac County

La Crosse County

League Of Wisconsin Municipalities

Ozaukee County

SILVER SPONSORS

Door County

Iowa County

Jefferson County

KEYNOTE SPONSOR



LUNCH SPONSOR



The Scope of the Conversation

14 Use Cases to
be Reimagined

- Road Maintenance and Winter Road Maintenance
- Drones in Public Service, 911 Center Operations
- Sheriff's Patrols, Tracking of Evidence, Jail Exit Guidance
- Application for Economic Support

So, What Exactly Happened?

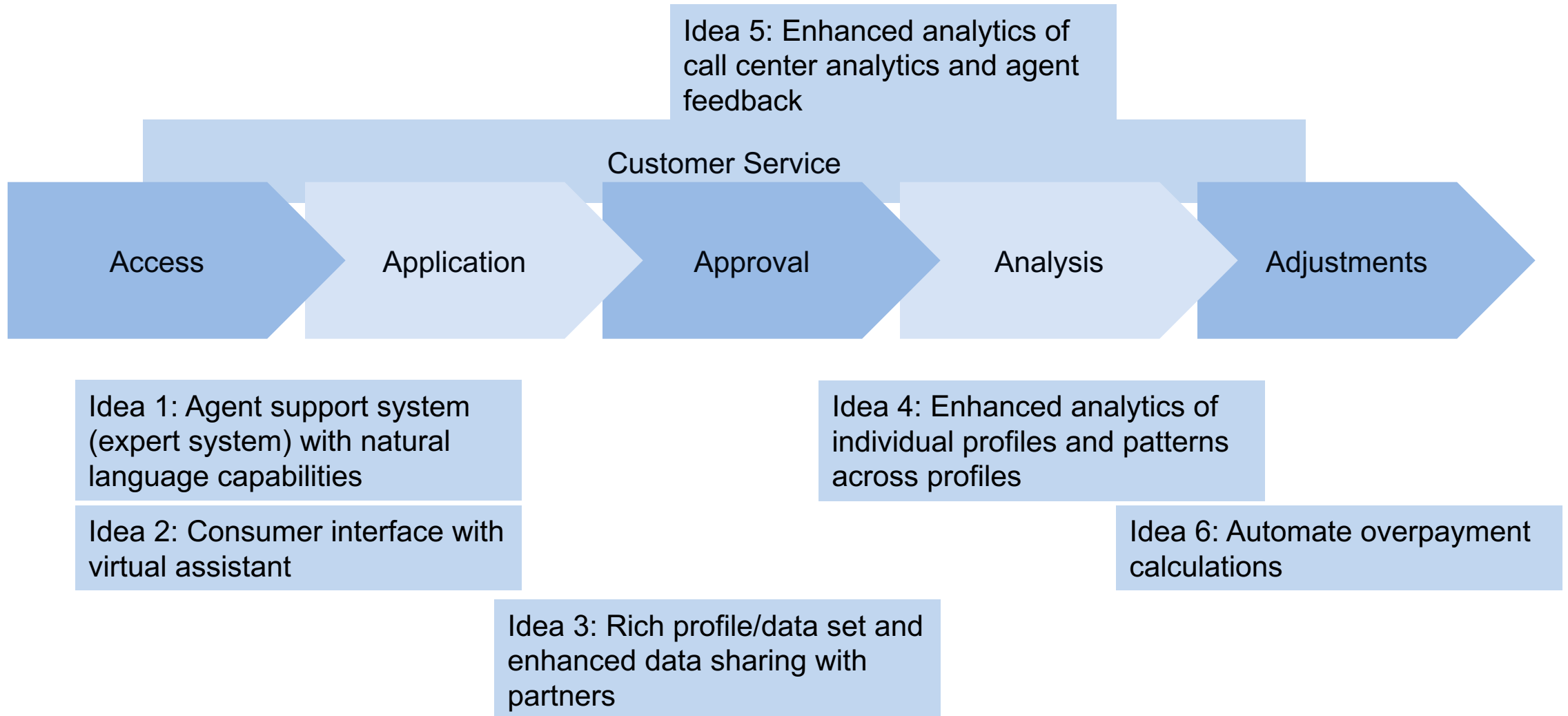
3 Events to Create
Ideas for Tomorrow

- Eau Claire, Green Bay, Cedarburg
- AI, IoT, Blockchain
- Keynotes to educate
- Problem definition to understand
- Brainstorming to imagine solutions

What are Key Outcomes?



Economic Support – Reimagining Highlights



*Starting point only,
needs further work*

Idea Profile: Agent Support System

What is the basic idea?

- Agents will have the opportunity to access a knowledge system in natural language to receive guidance, reduce ambiguity

How is technology being leveraged?

- Create a knowledge/expert system with Natural Language capabilities
- Virtual assistant interface for agents
- AI based mapping of areas of ambiguity

What benefits are derived?

- Enhanced ability of the agent to assist the customer, make accurate decisions/assessments
- Fewer cases go to committee, fewer workarounds
- Heatmap of policy change needs

What's next?

- Principal technology components exist, but have not been combined for this purpose
- Explore if pilots are underway (exact or analogous applications)
- Work with state agencies to test their receptiveness for technology upgrades (multiple agencies involved with varying technology status quo)
- Identify appropriate test scope (what, who, where)

*Starting point only,
needs further work*

Where is the Journey Going?



What is Next for the Digital County?

Continued
Advocacy by WCA

Brown County
Visionary
Leadership

Opening Doors and
Building Coalitions