

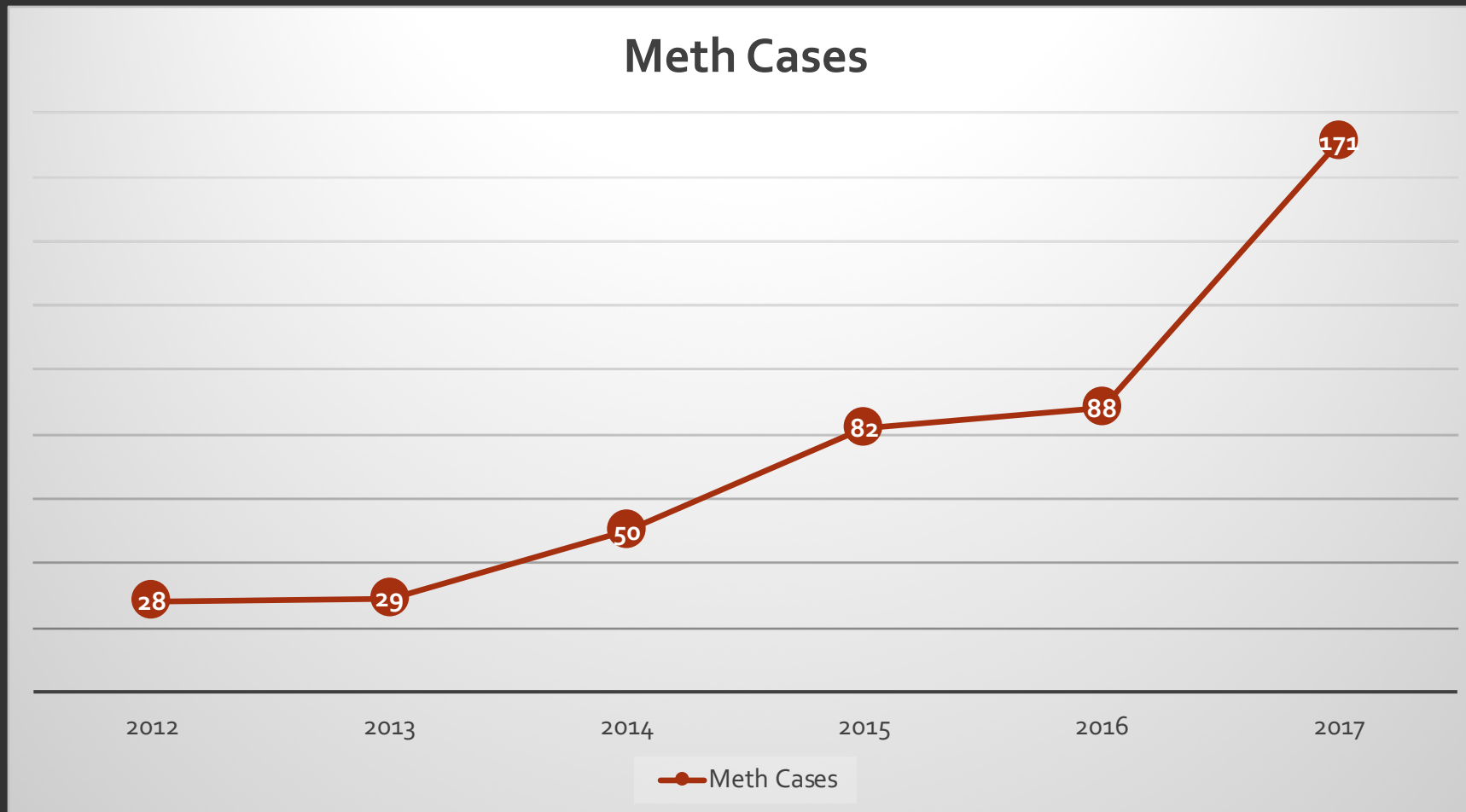
KNOW METH BARRON COUNTY



Stacey Frolik, DHHS Director

Sarah Turner, Public Health Specialist

METH IN BARRON COUNTY



HOW METH AFFECTS CHILDREN

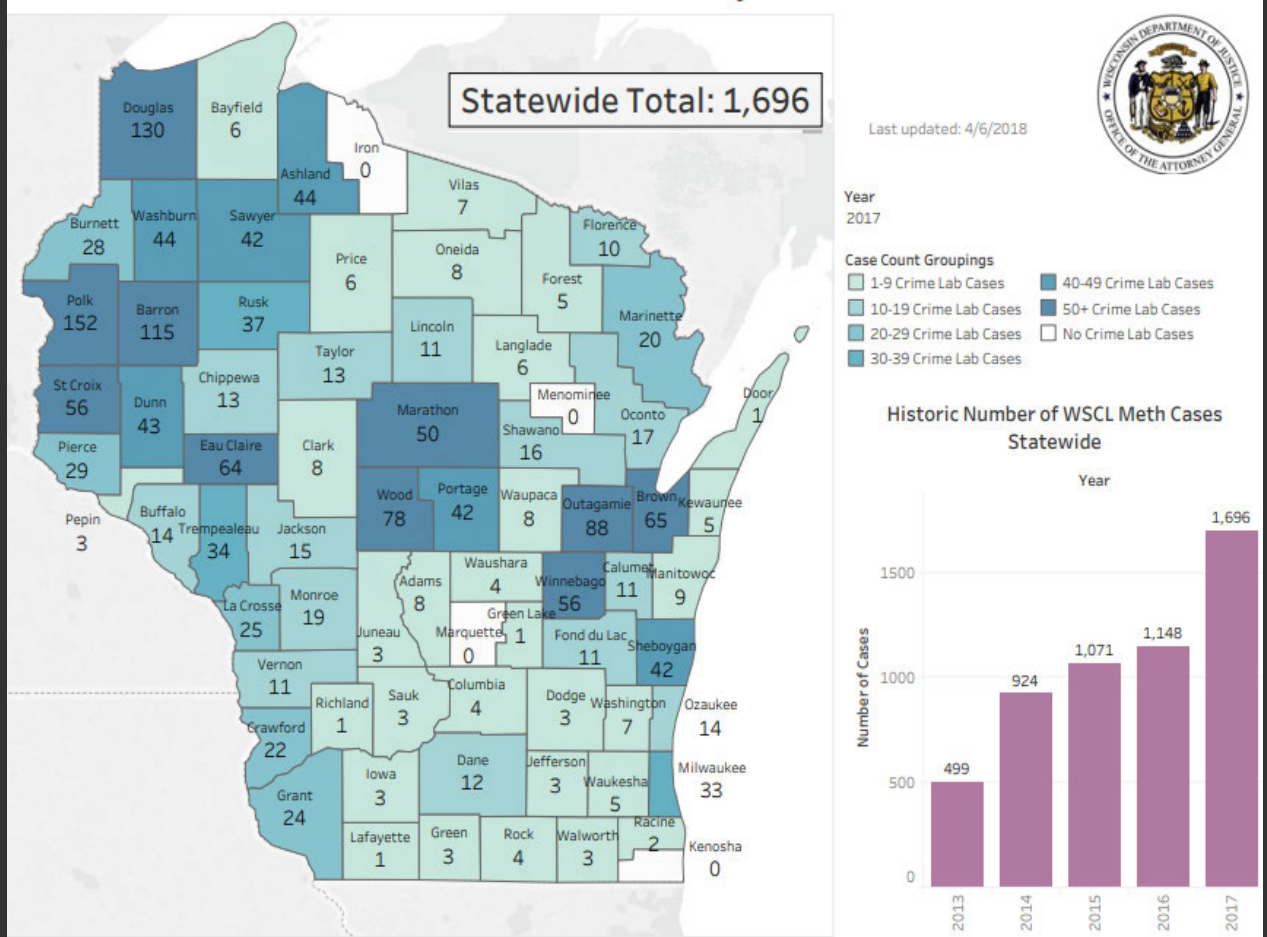


- 2017- **15** parental rights terminated
- 2017- **142** Meth related placements

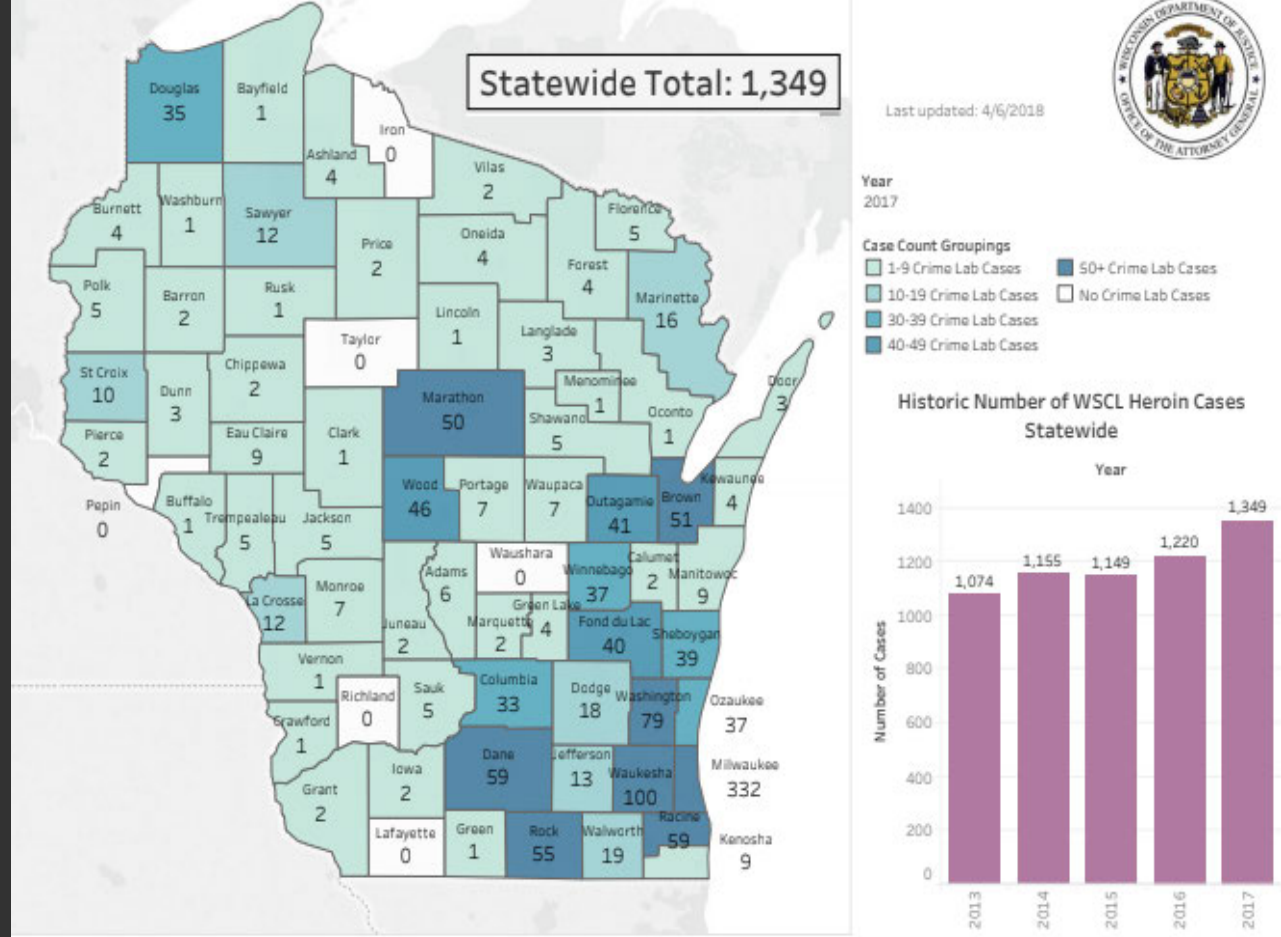
80% of all out-of-home
placements in child welfare are
Meth related

METH VS HEROIN

Number of Wisconsin State Crime Laboratory Bureau Meth Cases for 2017



Number of Wisconsin State Crime Laboratory Bureau Heroin Cases for 2017



LOCAL METH TASK FORCE

- Law Enforcement
- DHHS (public health, youth and families)
- Prevention
- Behavioral Health
- Consumers
- Drug Court
- Legal System

TOWN HALL MEETINGS



CAMPAIGN

TOGETHER WE CAN PROTECT OUR FUTURE



Don't Meth Around

Report Activity or Seek Help **715-537-METH**



METH IN BARRON COUNTY

Meth ravaging local families, county budgets

BY BOB ZIENTARA
BARRON NEWS-SHIELD

Barron County's Department of Health and Human Services operated at a roughly \$500,000 deficit last year, largely due to the extra costs of treating methamphetamine addiction and its effects on county families.

The unpleasant number were shr Feb. 11, meeting Criminal Justice Rating Council, police, judges, probation officers, health and human services workers. For the

Theft, meth, paraphernalia charges for Chetek driver

A Chetek man pulled over for allegedly driving while suspended now faces charges of felony possession of methamphetamine and misdemeanors theft and possession of drug paraphernalia. In Barron County Circuit Court Monday, Feb. 8, Jason J. Miller, 36, of Chetek, appeared for an initial hearing. Penalties include up to four years, four months in prison, 10 years suspended license and \$20,500 in fines.

had a suspended license, and the officer conducted a traffic stop. The driver was identified as Miller, and was confirmed to have a suspended license. Miller said he was returning home from his job at Chetek Express. At this time a Barron County Sheriff's Department deputy and K9 partner arrived, and the dog had a "hit" on the vehicle, meaning there was suspected contraband in the vehicle.

that later tested positive for methamphetamine. Underneath the backpack was a crate of merchandise with no proof of purchase. Miller stated he was going to pay for the items—including fuel cleaner, cigarettes and groceries—from the Chetek Express the next day. In court Feb. 8, Miller was bound over on a \$2,500 cash bond with conditions to have no contact with Chetek Express. He is scheduled to appear for a

Police raid results in meth charge for rural Chetek man

Barron County Sheriff's Department deputies raided a town of Doves residence and arrested a

'I don't think meth has slowed down for any department'

Miller presents police report

Barron Police Department was an active agency in 2015, according to an annual report presented at Tuesday's meeting of the City Council. "Some of the numbers are up, but the ones we would like to see go down, actually went down," Byron Miller, police chief, said. "Byron Miller, police chief, said. The department referred 14 more cases to the District Attorney's Office for criminal action than it did the year before, Miller's end-of-the-year statistics said. At least some of the problems have to do with methamphetamine use. "I don't think meth has slowed

amine pipe in a compartment in the table where Mayor was sitting. On his person, the complaint said, officers found numerous pills, a large

Last year, the city remodeled a shed behind City Hall to accommodate stray animals — mainly dogs. The animals stay there until they can be taken (by the city or Barron County Sheriff's police) to the Happy Trails kennel in Barron. The temporary (dog shelter) is working out well," Miller said. "We've had a couple situations where we have had to make repairs when the dogs try to get out — especially larger animals. The city maintains a

Mother takes daughter to father but leaves after seeing drug paraphernalia

A 25-year old Turtle Lake man was charged with disorderly conduct sleeping in a vehicle in front of his daughter's home.

Cameron man faces felony meth drug sale charges

A man who allegedly sold drugs to a police informant three times last year is facing more than 16 years behind bars in connection with felony drug charges filed Feb. 23, 2016, in Barron County Circuit Court. The complaint identifies the defendant as Kenneth J. Townsend, 61, 1391 19 1/2 St., Cameron.

The case dates back to early September 2015 when investigators for the Barron County Sheriff's Department and Rice Lake Police Department met with a confidential police informant.

The informant told investigators about a man who lived near Cameron who had sold him methamphetamine "multiple times."

The informant identified the defendant through a jail booking photo,

Items valued at \$150,000; thefts meth related, sheriff says

Stolen merchandise recovered

A three-week investigation by members of two county sheriff's departments has resulted in the arrest of a New Auburn man and the confiscation of an estimated \$150,000 in stolen items, according to Barron

County Sheriff Chris Fitzgerald. The case is a direct result of Barron County's continuing methamphetamine problems, the sheriff said. In a March 1, 2016, press release, Fitzgerald and Rusk County Sheriff

burglaries," Fitzgerald said. Possible charges include receiving stolen property and/or drug-related offenses, he said. The recovery of the stolen property is "a direct result of the methamphetamine

involved more than 25 burglaries in Rusk and Barron Counties, including a 2015 break-in at the Chetek River Campground.

"The case would not have been solved without the extra work put in

Mother recounts fighting meth addiction for her children

BY CARL COOLEY

A woman who battled addiction for years and lost her children to methamphetamine, said she is now living proof of that.

I gained them back. I am reunited with my children one year later," Black explained. "Now I am going to college to be an (alcohol and drug abuse) counselor, and get my GED." With help from the

ily Program manager. Broten said admitting there is a problem is the hardest step, but that is why there are drug screens and behavioral indicators of addiction to show people there is

am living proof of that." Black said her social worker was instrumental in her recovery, as well as her brother-in-law who cared for her children during this time.

Chetek area targeted to feed man's meth addiction

BY CARL COOLEY

Methamphetamine use was what led a New Auburn man to steal what could amount to as much as

CHETEK AREA TARGETED Of the 33 properties so far involved, the detective

was (for) cash, it was cash and (also) meth." CHETEK AREA TARGETED Of the 33 properties so far involved, the detective

thefts (over) two or three weeks," Utzinger recounted. "He was optimistic that they would show up at some point." His snowmobiles have yet

have closed. He's hoping to get them back so he can go riding with his two sons in the future, one of whom will be old enough to ride on his own in two years.

expecting too (many) more," the detective added. CONNECTING THE DOTS Connecting all the cases together involved 11 law enforcement agencies. Supervisor John Hardin, Dist. 2, New Auburn and townships of Doves and Sioux Creek, asked if there was anything

Black (for) cash, it was cash and (also) meth." CHETEK AREA TARGETED Of the 33 properties so far involved, the detective

thefts (over) two or three weeks," Utzinger recounted. "He was optimistic that they would show up at some point." His snowmobiles have yet

have closed. He's hoping to get them back so he can go riding with his two sons in the future, one of whom will be old enough to ride on his own in two years.

expecting too (many) more," the detective added. CONNECTING THE DOTS Connecting all the cases together involved 11 law enforcement agencies. Supervisor John Hardin, Dist. 2, New Auburn and townships of Doves and Sioux Creek, asked if there was anything

Woman allegedly sold meth to confidential informant

A woman who allegedly sold methamphetamine to a police informant during summer 2014 is now facing a felony charge, Barron County Circuit Court documents said.

A complaint filed Feb. 10, 2016, identifies the defendant as Crystaleena A. Peterson, 42, 1215 13 1/2 Ave., Barron.

In August 2014, Barron County Sheriff's police used a confidential informant to arrange a controlled buy of one fourth of a gram of meth.

Before the purchase was made, the defendant allegedly texted a photo of a meth pipe to the informant. Detectives gave \$40 in pre-recorded cash

to the informant, along with a global positioning satellite transmitter.

The informant went to a wayside on U.S. Hwy. 8, in the town of Sumner, on the morning of Aug. 20, 2014.

The defendant allegedly arrived in a pickup truck and the two drove to another location near 27th Street and 13 1/2 Avenue, where the transaction allegedly took place.

The substance sold in the transaction was later sent to the state crime lab, which confirmed it was meth.

Court records said that the defendant is due for an initial appearance on Wednesday, March 2.

Volume 141, Issue 25

Wednesday, February 17, 2016

www.ricelakeonline.com

Meth costing county thousands

Half of child abuse cases meth-related

By Elise Hinn
Chronicle staff

The effects of methamphetamine addiction devastates its users and their families. But they also take a heavy toll on the community in which they live, costing hundreds of thousands of dollars to combat its destruction. Last Thursday, Barron County Health and Human Services director Stacy Frolik told the Criminal Justice Collaborating Council that

the computer doesn't have the mechanism to pull those cases out for counting purposes, said Frolik.

Although she didn't have comparative data with her for the past 3-5 years, she said she knows from previous years.

Of the 173 meth-related cases, there were 133 children served with an average cost per child of \$6,552. As much as \$15,000 was spent on one family. "That's a pretty significant financial impact, in addition to the health and social impact on the county,"

to double the \$31,000 spent on drug testing because the county is the payer of last resort. A client's insurance or ability to self-pay are tapped first.

Frolik said the transportation file involves the department figuring out parents and children

"I also don't want to lose sight of the cost it has on the health of our community, the well-being of the kids, their safety, the trauma on these families. You can't put a dollar amount on those types of things."

Stacy Frolik,

MOCK ROOMS AND BACKPACKS



STAKEHOLDERS MEETING



KNOW METH REGIONAL REPORT

Northwest Wisconsin

kNOw Meth



Stakeholders' Forum Summary
&
Recommendations

Prepared by: Christy Niemuth, Hope Consulting LLC. April, 2017

- “For most of the guys I work with, they grew up in a home where drug and alcohol use and alcohol abuse was a way of life. For them this isn’t recovery, because recovery means you are getting back something you had; most never had that life of sobriety. This is more of a discovery for them. They are discovering a new way of living without the drugs and alcohol.
- -Mark Stoner, St. Croix Chippewa Tribe of Wisconsin

REGIONAL REPORT RECOMMENDATIONS

- Community Resources
- Prevention
- Access to Treatment
- Recovery Support
- Law Enforcement/Criminal Justice

OUTCOMES OF REPORT



JOIN US!!

BURNETT COUNTY JAIL

Positive Thoughts...

Positive Actions...

Positive Skills

For Your First Day Out!

MISSION:

Help create a plan for the first day out of corrections/jail, in order to begin on a new path to healthy and responsible living. Setting up the foundation for success.

Twice a Month

Friday, March 17, 2017 6:30 pm (Mens)

Friday, March 24, 2017 6:30pm (Womens)

Group Facilitators: Mark Stoner (Mens Group)

Charity Rogers (Womens Group)



STRENGTHENING FAMILIES AND BREAKING CYCLES OF ADDICTION

12 STEP DISCUSSION

THURSDAYS @ 7PM

NAR-ANON FOR FAMILY
AND FRIENDS

THURSDAYS @ 6PM

FOSTER CARE PROGRAM RECRUITMENT,
FOSTER FAMILY SUPPORT
& START UP HELP

RED CEDAR RESTART EDUCATION,
COACHING,
& SUPPORTS *LAUNCHING EARLY 2017
IN THE BC JAIL*

REGROUP SUPPORT GROUP *STARTING DEC 1ST
@ 6PM AT THE GAP*

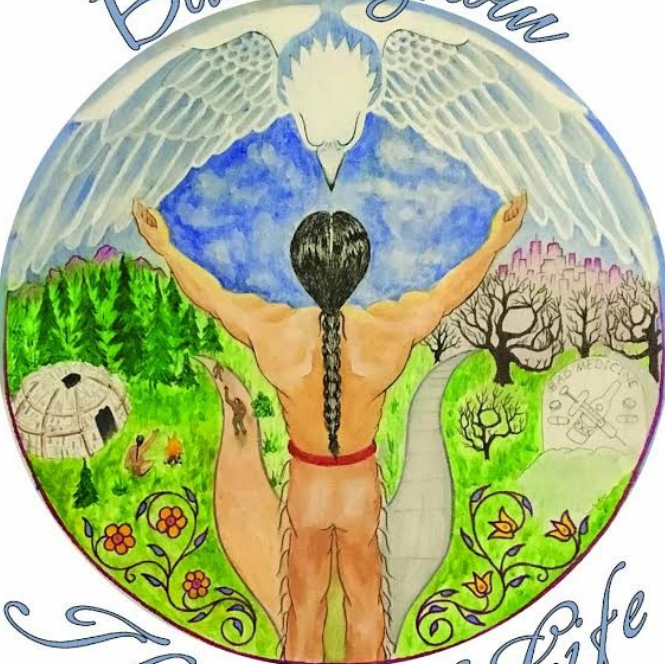
FOR MORE INFORMATION EMAIL: outreach@redcedarchurch.com

TRIBAL PARTNERSHIPS

*Healing Ceremonies
Talking Circles
Speakers*

*Mino
Bimaadiziwin*

*Information Booths
Time for Sharing
Elders*



The Good Life

Community Awareness and Healing Event
Recovering from loss and hurt from drugs and alcohol's impact on our families and communities Food will be served Shuttles available at community sites **Thursday February 16 10am to 8pm**
St. Croix Casino Danbury - Event Center

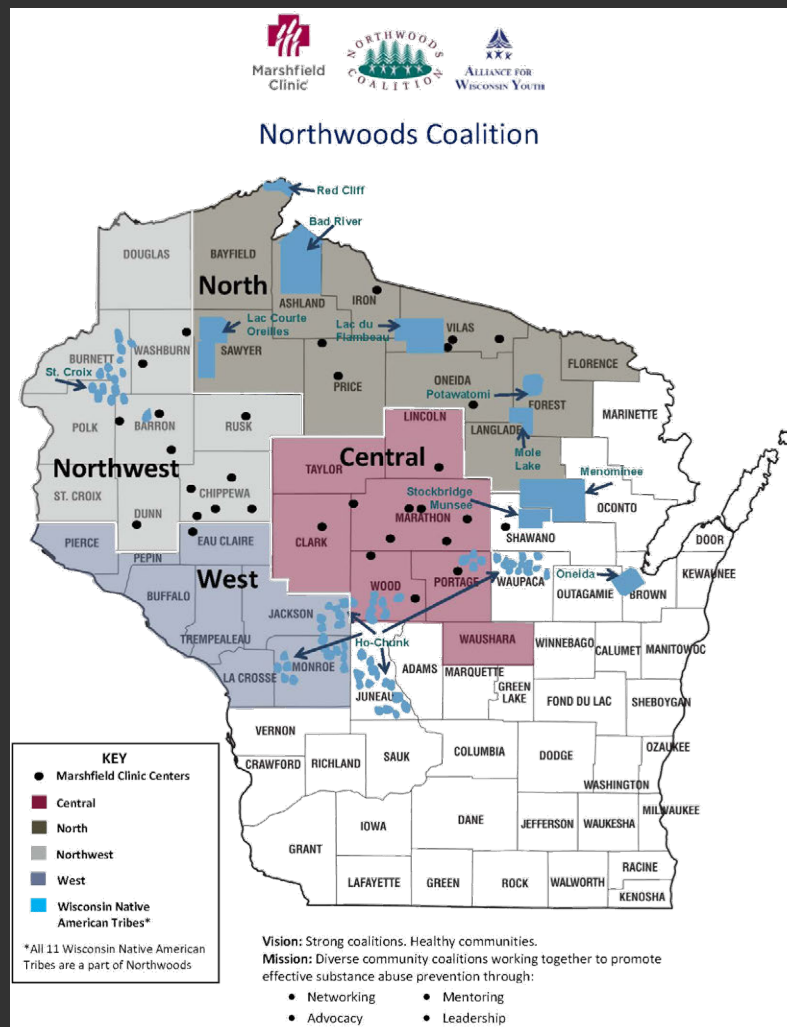
TREATMENT WITHOUT BORDERS



DRUGS OVER DINNER



NORTHWOODS



**JOIN THE FIGHT AGAINST
METHAMPHETAMINE
IN OUR COMMUNITY**

**KNOW
METH**

**AWARENESS
DAY**

November 30, 2018

OPERATION KNOW METH

- Creating a local plan with key decision makers
- Addressing this as a public health issue
- Getting everyone on board
 - Somali meetings
 - Tribal meetings

OPERATION KNOW METH

- CARA grant
- Increase media attention
- Quit making meth addiction seem so hopeless
- Educate workforce
- Continue to expand treatment options
- Foster parent/Foster care
- Tribal involvement
- Housing
- Hold meth dealers accountable

QUESTIONS

KNOW

METH

knowmethwi.org