

The background of the slide is a light blue color with several water droplets of various sizes scattered across it. The droplets have a realistic appearance with highlights and shadows, giving them a three-dimensional look. They are positioned in the top-left, bottom-left, and bottom-right areas of the slide.

WISCONSIN
COUNTIES
ASSOCIATION 81ST
ANNUAL CONFERENCE

EVIDENCE-BASED DECISION MAKING COUNTY EXAMPLES AND EXPERIENCES

TIANA GLENNA
CRIMINAL JUSTICE MANAGER
EAU CLAIRE COUNTY

ELIZABETH POHLMAN MCQUILLEN
JUSTICE SYSTEM MANAGER
ROCK COUNTY

TOPICS



What is a Criminal Justice Collaborating Council (CJCC)



What is Evidence Based Decision Making (EBDM)



County Examples



Experiences

WHAT IS A CJCC?

AN INCLUSIVE TERM APPLIED TO INFORMAL AND FORMAL COMMITTEES THAT PROVIDE A FORUM WHERE MANY KEY JUSTICE SYSTEM AGENCY OFFICIALS AND OTHER OFFICIALS OF GENERAL GOVERNMENT MAY DISCUSS JUSTICE SYSTEM ISSUES.



KEY ELEMENTS OF CJCCS



Defined purpose

Broad and aspirational,
but pragmatic

Focus on promoting the
best interests of the
system

Vehicle for change



Membership

Have key decision-
makers at the table

Include important system
partners

Ensure there is balanced
representation



Leadership

Select someone who is
respected, neutral

Leadership must be
progressive, systemic-
oriented



Meetings

Schedule meetings
regularly (monthly or bi-
monthly)

Always have a
meaningful agenda

WHY THE NEED FOR A CJCC?

By design, the criminal justice system is fragmented

No central authority manages it.

No one branch or level of government is responsible for the entire process.

There is great dispersion of power among divergent forces.

Key participants may have diametrically opposed interests.

Lack of communication/coordination can result in inefficient use of resources, system delays and decreased public safety

Focus on policy and program level planning

EVIDENCE BASED DECISION MAKING

NATIONAL INSTITUTE OF
CORRECTIONS

[HTTP://EBDMONELESS.ORG/](http://EBDMONELESS.ORG/)

EBDM
The Evidence-Based Decision Making in State and Local Criminal Justice Systems Initiative

NIC
National Institute of Corrections

TOOLS & RESOURCES ABOUT NEWS STARTER KIT

EBDM SITES

- Phase II/III
- Phase V/VI - Indiana
- Phase V/VI - Virginia
- Phase V/VI - Wisconsin

Map Satellite

Eau Claire County, Wisconsin
[More details](#)

United States

EBDM IN PRACTICE

- Phase II/III Local Sites
- Phase IV State Sites
- Phase V/VI State and Local Sites

FEATURED PRODUCTS

- Framework
- Starter Kit

EBDM NEWS

- Rethinking the Money Bail System, Wisconsin Lawyer
- Milwaukee Moves Away from Money Bail System, Wisconsin Lawyer
- Evidence-Based Decision Making in Outagamie County Courts (Radio Interview)
- County-State Collaboration in Building High-Functioning Pretrial Systems (NACo/NIC)
- Digging Deeper: Sentencing Sense, February 2017

The Center for Effective Public Policy
Helping Justice Systems Discover Solutions

The Carey Group

EBDM OVERARCHING GOAL

**TO CREATE A FRAMEWORK FOR JUSTICE
SYSTEMS THAT WILL RESULT IN IMPROVED
SYSTEM OUTCOMES**

***THROUGH TRUE COLLABORATIVE
PARTNERSHIPS,***

SYSTEMATIC USE OF RESEARCH,

***AND A SHARED VISION OF DESIRED
OUTCOMES.***



EBDM IS GROUNDED IN 4 GUIDING PRINCIPLES



ENHANCED WHEN
INFORMED BY EB
KNOWLEDGE



OPPORTUNITY FOR
HARM REDUCTION



OPERATE
COLLABORATIVELY



DECISIONS BASED
ON DATA

EBDM ROAD MAP

EBDM STARTER KIT



INTRODUCTION ACTIVITY 1 ACTIVITY 2 ACTIVITY 3 ACTIVITY 4 ACTIVITY 5 ACTIVITY 6 ACTIVITY 7 ACTIVITY 8

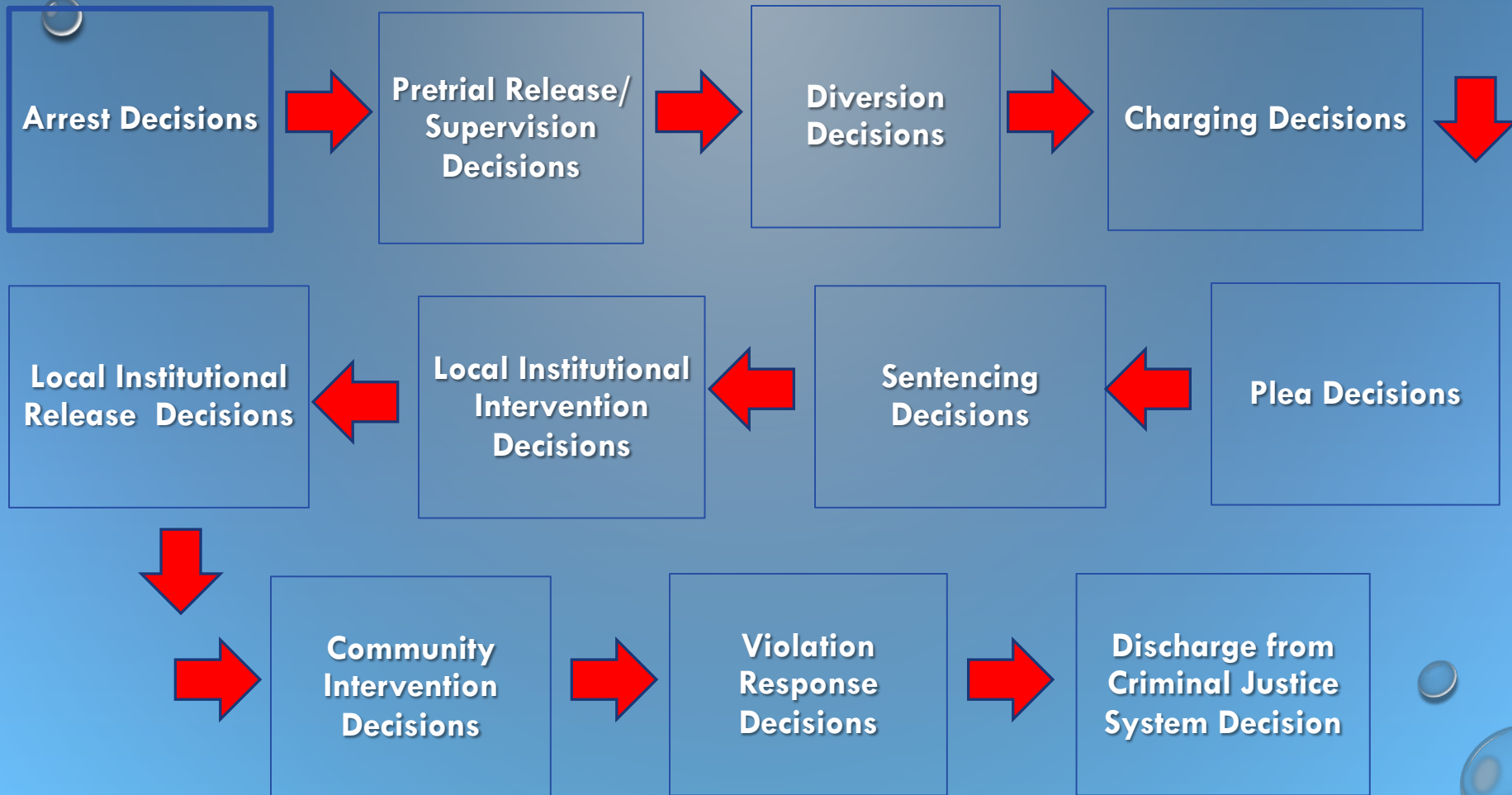
EBDM STARTER KIT

ACTIVITY 3: UNDERSTAND CURRENT PRACTICE WITHIN EACH AGENCY AND ACROSS THE SYSTEM

1 2 3 3a 3b 3c 3d 3e 4 5 6 7 8

- BUILD COLLABORATIVE POLICY TEAM
- READINESS SURVEY
- SYSTEM MAP
- POLICY/PRACTICE ANALYSIS
- RESOURCE INVENTORY
- BASELINE DATA
- CHANGE TARGETS
- LOGIC MODELS
- PERFORMANCE MEASURES
- STAKEHOLDER SUPPORT
- IMPLEMENTATION

KEY DECISION POINTS

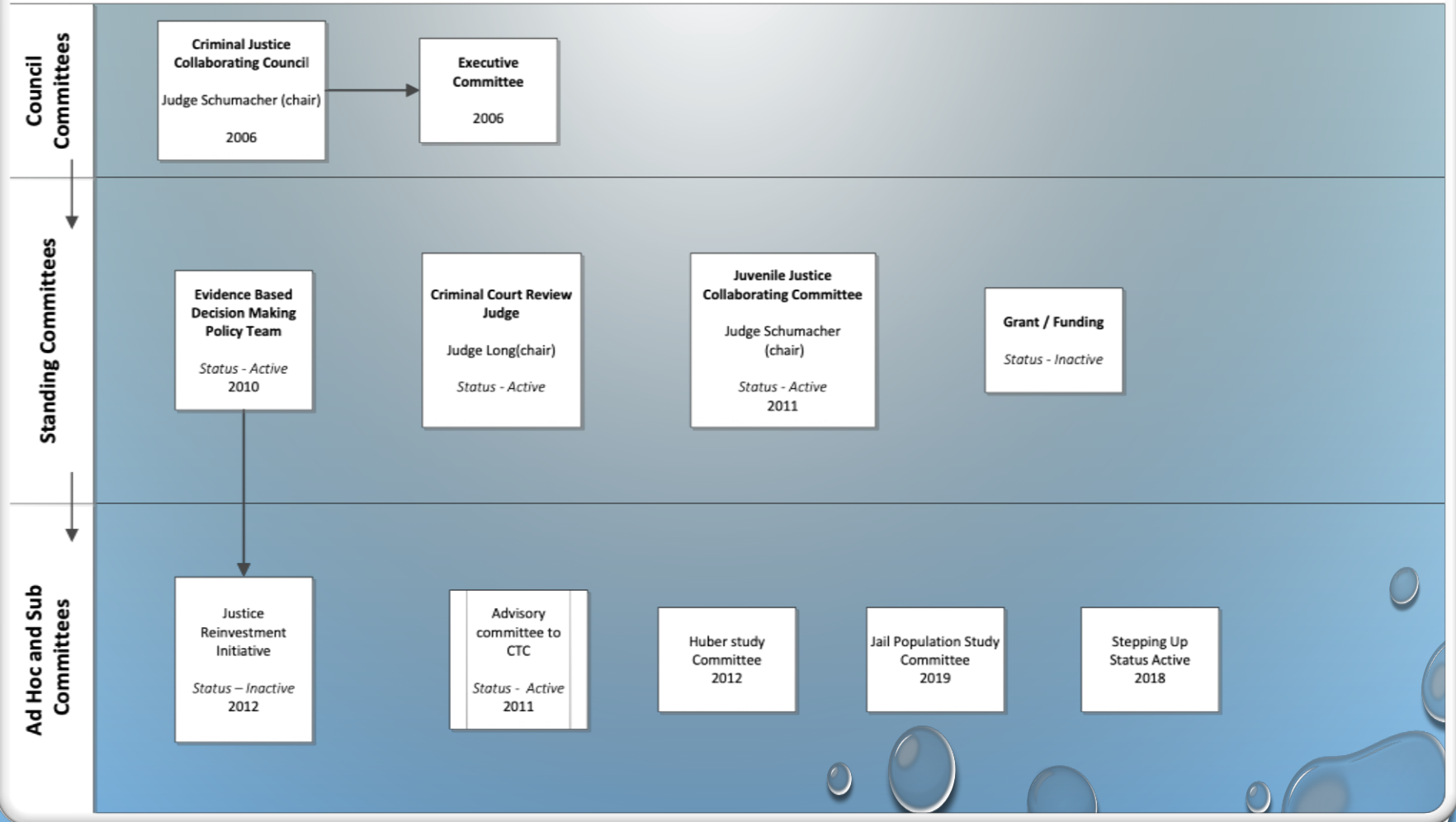


EAU CLAIRE COUNTY - STRUCTURE

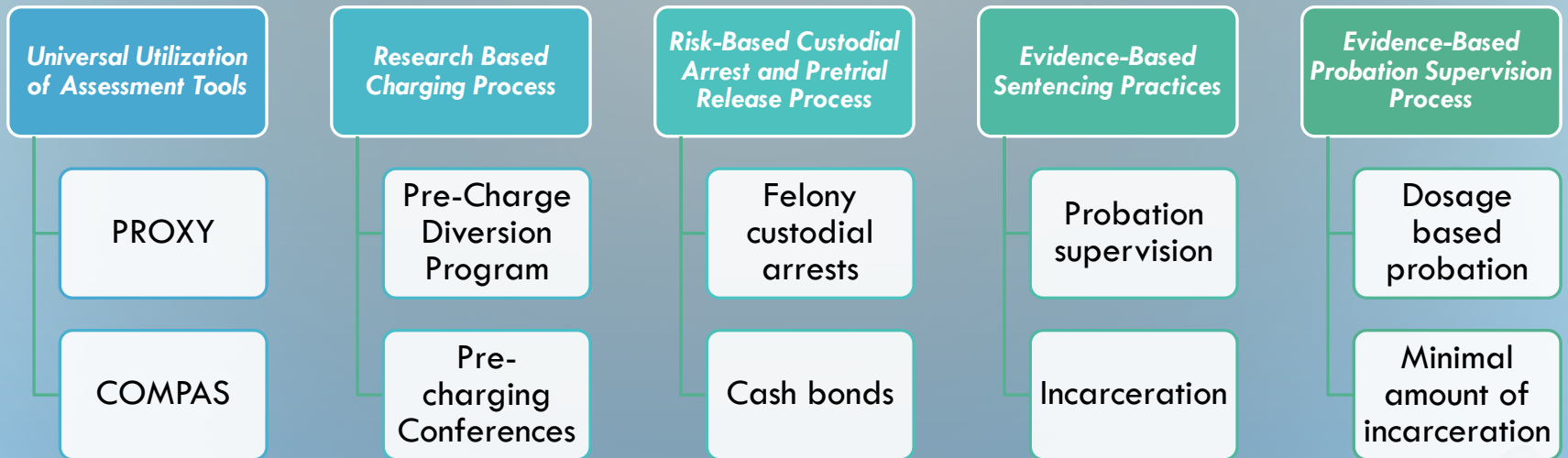
Eau Claire County, Criminal Justice Collaborating Council – Committee structure org chart

All committees report directly to the CJCC council

Updated 2.8.2015



ECC CHANGE TARGETS



2019 Programming

Blue labels are links to web pages
Red are CJCC programs

Law Enforcement Contact

- Lethality tool
- LE Mental Health Flag
- Northwest Connections
- Crisis Response
- Pre-Charge Diversion
- Proxy tool
- LE Order-in process

Pretrial

- Pretrial screening and monitoring
- Community Transition Center
- Jail Based Programming
- Jail Re-entry program
- Jail MH crisis intervention
- Warrant Program

Sentenced

- Community Service
- OWI early intervention
- DAGP
- RAPP
- Treatment Court
- Probation

2020 Focus



Stepping up

- Lead program
- <https://www.leadbureau.org/>
- <https://stepuptogether.org/>
- Mental health clinic
- **jack charliee**



Pretrial Program

- Universal screening and referral



Treatment Courts

- Referrals
- Outcomes



Community Service

- Revitalize program
- Outcomes

ROCK COUNTY STRUCTURE

CJCC



CJCC made up of 17
CJS Stakeholders
and Community
Members
Meets Monthly



Workgroups and
Subcommittees
Established as
needed

EBDM



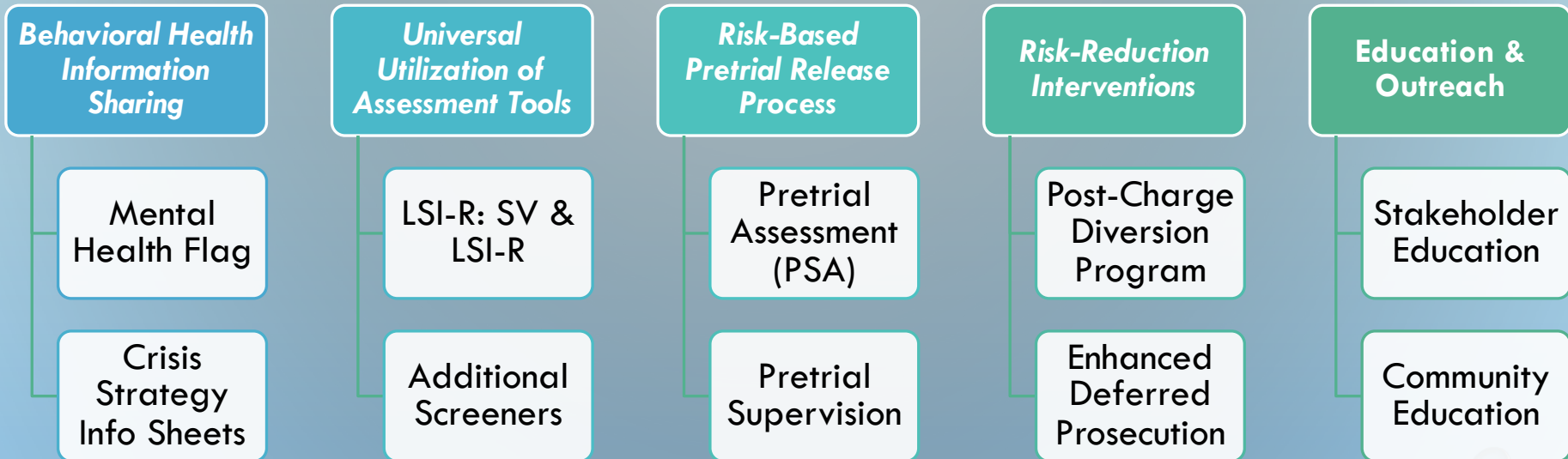
EBDM made up
of 19 CJS
Stakeholders
Meets
Bi-Monthly



Established 4 Workgroups:

- BH Info Sharing
- Risk Assessment & Pretrial Interventions
- Risk Reduction Interventions
- Education & Outreach

ROCK COUNTY CHANGE TARGETS



ROCK COUNTY 2019-2020 EBDM SERVICE DELIVERY OUTPUTS



KNOWLEDGE RESOURCES

NIC EVIDENCE-BASED DECISION-MAKING WEBPAGE:

[HTTP://NICIC.GOV/EBDM](http://NICIC.GOV/EBDM)

[HTTP://WWW.EBDMONELESS.ORG/](http://WWW.EBDMONELESS.ORG/)

CJCC WHITE PAPERS

[HTTPS://WWW.BJA.GOV/PUBLICATIONS/CJCCWHITEPAPEREXECSSUMMARY.PDF](https://WWW.BJA.GOV/PUBLICATIONS/CJCCWHITEPAPEREXECSSUMMARY.PDF)

[HTTPS://S3.AMAZONAWS.COM/STATIC.NICIC.GOV/LIBRARY/017232.PDF](https://S3.AMAZONAWS.COM/STATIC.NICIC.GOV/LIBRARY/017232.PDF)

STATE OF WI – CHANGE TARGETS



Professional Development / Training



Develop model policy/practices



System wide - Collaboration



Application of system – wide Risk
assessment tool/EBP



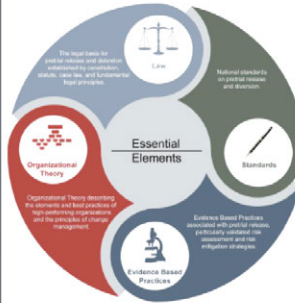
Diversion/Enhance behavioral change
interventions



Data and research

A Framework for Pretrial Justice

Essential Elements of
an Effective Pretrial
System and Agency



Wisconsin
Diversion
Standards



640 N. Capital Street NW
Suite 410
Washington, DC 20001

877-855-7418
www.napsa.org
info@napsa.org

National Association of Pretrial Services Agencies

DIVERSION RESOURCES

WHAT IS DIVERSION?



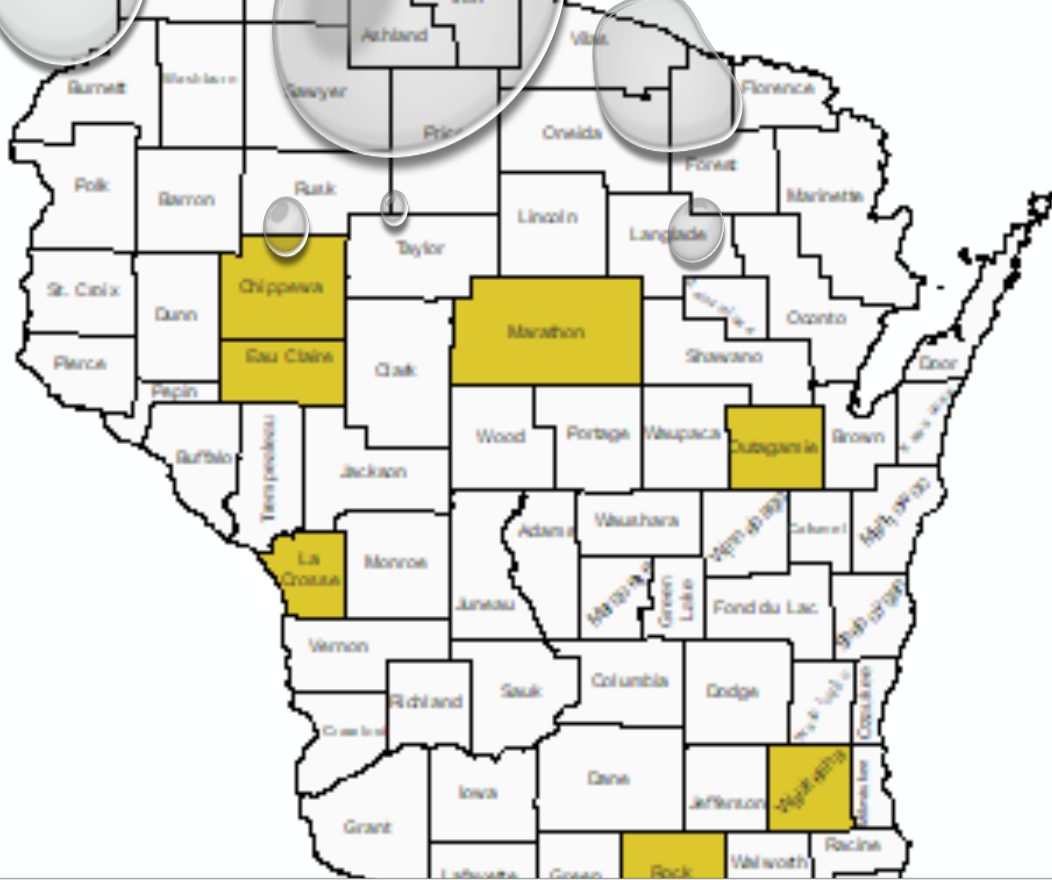
The goals of diversion in Wisconsin are to increase **public safety**, reduce harm, and use **resources effectively**.



For the purpose of these Standards, “diversion” encompasses pre-charge and post-charge programs that provide an alternative to the formal prosecution process and allow certain offenders to enter voluntary programs of supervision and services.



In an effort to reduce the collateral impact, participants who successfully complete the program will not be charged or, if charged, will have the charges or penalties against them dismissed or reduced. Unsuccessful participants are returned to (or referred to) the formal prosecution process.



WISCONSIN EVIDENCE-BASED DECISION-MAKING PRETRIAL
PILOT PROJECT
PUBLIC SAFETY ASSESSMENT (PSA)



EBDM INITIATIVE

The pretrial change target was common across all of Wisconsin's EBDM teams

Each county was provided the opportunity to join the pilot (and each did)

Through the pilot, State and local team representatives have worked in partnership to plan the pilot

The expectation is that the work of the pilot sites will result in a model for other counties to follow

The goal of the pilot project is to establish a system of legal and evidence-based pretrial practices that is guided by clearly defined principles.

